

FIJI



VIVA
HOLIDAYS

CELEBRATING

50
Years
OF TRAVEL

EXPERIENCE FIJI WITH VIVA HOLIDAYS!

Famous for its sundrenched islands, palm fringed white sand beaches, turquoise blue waters, lush rainforests and rugged volcanic peaks, Fiji offers something for everyone. Stay in luxury resorts, indulge in spa treatments or discover a slice of traditional village life. Be assured you'll always receive a friendly 'bula' welcome!

Viva Holidays is proud to be celebrating 50 years in the travel business. Trust us to make your dream Fiji holiday a reality.

CHOOSE VIVA HOLIDAYS AND LIVE A LIFE OF TRAVEL.



Front cover image: Jackies Reef, Mamanuca Islands

Image this page: Tivua Island, Mamanuca Islands



Visit Fiji, where happiness comes naturally, and receive a warm Fijian 'bula' and smile

Tourism Fiji/Ian Butterworth



Captain Cook Cruises



Tourism Fiji

Yasawa Islands

CONTENTS

Navigating This Brochure	5
Travel Tips	7
Experiences You'll Love	8
Island Cruising	10
Island Adventures	12
Car Hire	13
Transfers	14
Tours	17
Nadi & Surrounds	20
Denarau Island	23
Coral Coast	27
Mamanuca & Yasawa Islands	33
Regional Fiji	40
Accommodation Index	42
Booking Conditions	43



CELEBRATING



WHY CHOOSE VIVA HOLIDAYS

Viva Holidays has been creating exceptional worldwide holiday experiences for 50 years. Your arrangements will be managed by our travel specialists who are dedicated to servicing enquiries to your chosen destination and are experts at designing holidays to perfectly suit your travel needs. You'll always be in experienced hands when you travel with Viva Holidays.

MORE CHOICE

Our extensive product range caters for every type of holiday. Accommodation, car hire, theme parks, attractions, day and extended tours, rail tours and cruises – we've got it covered.

We have incredible deals available throughout the year, so make sure you ask your travel agent for our best price.

EXCEPTIONAL SERVICE

Exceptional customer service is behind everything we do. That's why we've regularly been voted as the Best International and Australian wholesaler at the National Travel Industry Awards. Our team are passionate about travel and providing outstanding service. Let us do the research, planning and booking to ensure your holiday is one you'll always remember.

PEACE OF MIND

Viva Holidays is a proud member of ATAS, the Australian Federation of Travel Agents Travel Accreditation Scheme, having met the strict financial and customer service accreditation criteria. When you book your holiday with Viva Holidays, you will have peace of mind knowing that you are booking with one of Australia's most trusted travel companies.

24/7 ASSISTANCE

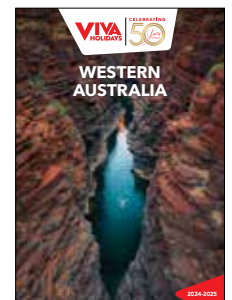
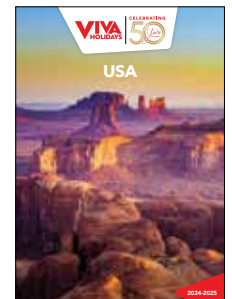
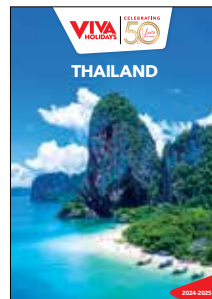
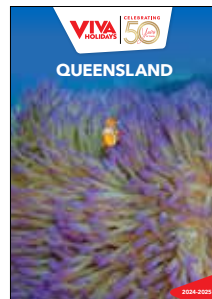
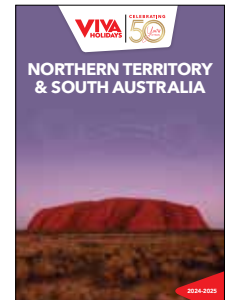
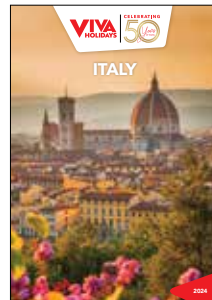
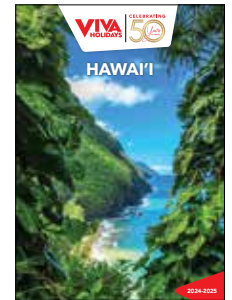
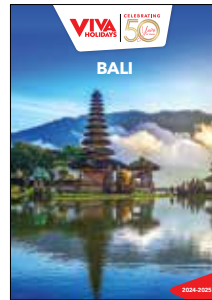
When you book with Viva Holidays, you'll never be on your own. In the event of unforeseen circumstances, our customer care team is available 24 hours a day, seven days a week.

TAILOR MADE HOLIDAYS

Whether it's island hopping around the stunning Mamanuca and Yasawa Islands, seeking adventure on a jetboat ride on the Sigatoka River or simply relaxing at a beachfront resort, our team of travel specialists can design a custom-made itinerary just for you!

Let us create your dream holiday today.

LIVE A LIFE OF TRAVEL. LET VIVA HOLIDAYS TAKE YOU THERE!





Kava Ceremony, Yanuca Island, Coral Coast



Nanuya Island



Coral Coast

NAVIGATING THIS BROCHURE

The following symbols should be used as a guide to assist in choosing the accommodation or touring option that best suits your needs.

Our Destination Specialists have negotiated a range of special offers including free meals, free nights, early bird booking discounts and more. Look for the following symbols on individual property listings and ask your travel agent for full details of the offer available.



Early Bird Offer

A discount off the regular room price is available at certain times of the year for advance bookings.



Kids Dining Offer

A dining offer for children is available, e.g. discounted or free meals. Child ages, meal types and conditions vary.



Free Night Offer

Receive one or more free nights for stays at certain times of the year.



Honeymoon Offer

A special bonus offer is available if you are celebrating your honeymoon. This may include sparkling wine, flowers, chocolate or fruit platters, welcome drinks, romantic dinners, spa treatments, late check-out or room upgrades. A minimum stay may be required and conditions vary. Advise your travel agent at the time of booking.



Bonus Offer

A bonus offer is available at certain times of the year, e.g. free breakfast, food and beverage credit, spa treatment, late check-out, room upgrade and more.

SYMBOL GUIDE



Properties offering free Wi-Fi access in common areas and rooms.



Properties offering in-room disabled facilities.



Properties offering family friendly facilities, which may include a kids club, kids eat free offer, family or interconnecting rooms and discounts off a second room.



Properties featuring an all inclusive price with breakfast, lunch and dinner included. Some properties may also include beverages, day excursions and activities. Conditions may apply. Ask your travel agent at the time of booking for further details.



Properties featuring the Luxury Collection symbol, in our view, provide an exceptional standard of accommodation, facilities and service.

OUR RATINGS

The accommodation ratings featured in this brochure will provide a general indication of the standard of accommodation and may alter throughout the year due to a change of circumstance. These are our views and are not related to any other rating system. We recommend checking with your travel agent to find the accommodation that best suits your needs and budget.

- ◆◆◆ Comfortable
- ◆◆◆◆ Superior
- ◆◆◆◆◆ Deluxe
- ◇ Half rating



TRAVEL TIPS

WHEN TO GO

Fiji enjoys a tropical climate all year round. Between the months of May and October, the humidity drops and it's the perfect time for swimming or lazing on white sandy beaches, exploring beneath the waves and discovering the jungle-clad inland. Divers and snorkellers will experience increased visibility around the coral reefs.

From November to April, known as the green season, the temperature and humidity start to climb. This time of the year is often characterised by afternoon showers that bring a welcome respite from the heat. Overall for those wanting a lazy beachside holiday, there is no wrong time to visit Fiji.

VISAS & PASSPORTS

All travellers to Fiji must carry a passport valid for at least six months beyond the date of departure from Australia. As visa information can change at any time, we recommend you seek advice regarding passports, visas and other travel requirements for the countries you intend visiting, from the Australian Government at smartrtraveller.gov.au.

TIME

Fiji is 2 hours ahead of Australian Eastern Standard Time (AEST). Daylight Saving Time is observed from November to January when clocks are turned forward by 1 hour.

ELECTRICITY

240V 50Hz. An adapter is not required.

CURRENCY

Fijian Dollar (FJD).
ATMs are located in major urban areas. All major credit cards are widely accepted.

TIPPING & BARGAINING

Tipping is not encouraged in Fiji. Bargaining is generally not encouraged, however may be acceptable with some Indo-Fijian merchants.

LANGUAGE

English is the official language. Several Fijian dialects and Fijian Hindi are also widely spoken.

ETIQUETTE

Dress modestly when outside your hotel or resort and remove hats and sunglasses when visiting villages. Females should cover their knees and shoulders when visiting temples and villages.

GETTING AROUND

Take the time to explore and discover as you make your way around Fiji. The standard left hand rule applies to driving in Fiji. The maximum speed limit in villages and towns is 50km/h, with 80km/h along the highway and in less populated areas.

A current drivers licence from an English speaking country is required while drivers from other countries need an international driving permit.

Fiji is the perfect destination for a driving holiday. While driving distances are short, it is important to note that the winding roads can mean travel times are longer than anticipated.

Nadi to Coral Coast	85 km	1 hr 30 mins
Nadi to Pacific Harbour	144 km	2 hrs 30 mins
Nadi to Suva	190 km	3 hrs 20 mins
Nadi to Rakiraki	132 km	2 hrs 25 mins

TEMPERATURE & RAINFALL

Nadi	J	F	M	A	M	J	J	A	S	O	N	D
Temperature (max °C)	31	31	31	30	29	28	28	28	29	29	30	31
Average rainfall (mm)	299	302	324	163	78	62	46	58	77	103	138	159



PACIFIC OCEAN



EXPERIENCES YOU'LL LOVE

The best part of any journey is the experiences you have along the way, leaving you with memories to relive long after the holiday is over.

Fiji has countless amazing things to see and do. Here are five of our favourites to inspire your wanderlust.



Malamala Beach Club



Bligh Waters, Suncoast

HIP BEACH CLUBS

Getaway from your resort for a change of scenery and head to a beach club for a memorable Fijian experience. Malamala Beach Club, the world's first beach club located on its own private island, offers crystal clear waters and white sand beaches and beachside cabanas to relax in while taking in the views across the Mamanucas. Hang out on Cloud 9, Fiji's first and original floating bar and pizzeria. Sip on cocktails, chill out and listen to a DJ spin tunes or swim and snorkel in the turquoise waters off the pontoon.

SNORKELLING AND DIVING

Fiji is known as the soft coral capital of the world and its warm, clear waters offer some of the best year round diving and snorkelling. Vibrant coral reefs surround Fiji's 333 islands and atolls. The Mamanuca and Yasawa Islands are great for viewing colourful coral and fish, while the diving off Rakiraki is one of Fiji's best kept secrets. The Northern Islands offer unparalleled snorkelling and diving access with Namena Marine Reserve a drawcard for its biodiverse waters and opportunities to swim with humpback whales.



Fire dance, Coral Coast

FIJIAN CULTURE

A village visit is a highlight of any Fijian holiday and provides a great insight into the traditional way of life. Be greeted by smiling children calling out 'bula', take part in a kava ceremony, sample authentic Fijian cuisine at a Lovo feast and marvel at the ancient ritual of firewalking. Watch a meke, from a graceful fan dance to a blood-curdling spear dance, it is a symbolic story told through song and dance. You can experience the culture at one of the many resort cultural nights or reserve a seat at Fiji Untold for the ultimate arts and culture experience.



Meke, Outrigger Fiji Beach Resort



The clear tropical waters, brilliant coral reefs and the amazing variety of marine life make the Fiji Islands a perfect spot for snorkelling and diving

ADVENTURE ACTIVITIES

In Fiji, many adventure experiences can be checked off even the most impressive bucket list. Pacific Harbour is Fiji's adventure capital and adrenalin junkies will love what's on offer, from thrilling jet boat rides and white water rafting to ziplining through lush rainforests and quad biking. For something a little more laid-back try your luck on a fishing charter. In the Yasawa Islands, dive with sharks or swim with the Manta ray. Experienced board riders won't want to pass up the chance to surf at the iconic Cloudbreak.

SMALL SHIP CRUISING

Go on a journey through paradise and discover the real Fiji. With over 300 tropical islands, a cruise is one of the best ways to explore the crystal waters, tropical atolls and striking volcanic outcrops. Cruising through Fiji is an experience of a lifetime, sail to uninhabited islands, anchor in private lagoons or spend countless hours lazing on golden beaches. Blue Lagoon and Captain Cook Cruises have small cruise ships that can negotiate reefs and remote islands with ease. Snorkel from the ship or go ashore and visit one of the local villages dotted throughout the islands.



Captain Cook Cruises



Sigatoka River Safari



Blue Lagoon Cruises

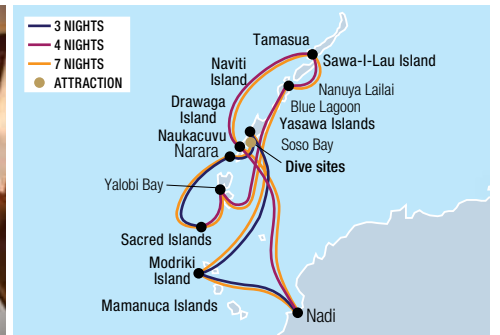
ISLAND CRUISING



Drawaqa Island



Hibiscus Cabin



FIJI PRINCESS – BLUE LAGOON CRUISES

With over 70 years sailing the tropical waters of the South Pacific, Blue Lagoon Cruises specialises in offering three, four and seven night itineraries through Fiji's spectacular Mamanuca and Yasawa Island groups. The M.V. Fiji Princess accommodates a maximum of 64 guests allowing for a personal and friendly atmosphere, which is complemented by the enthusiastic all-Fijian crew. The ship's small size means it can access bays and islands that would be impossible to reach in a larger ship. With a maximum of four hours cruising per day there is more time for exploring onshore. Visit remote island villages, discover ancient Fijian culture and enjoy the private beach on Nanuya Lailai Island. Swim with Manta rays (seasonal) and stop off at the Sacred Islands and Sawa-I-Lau Caves. A Blue Lagoon Cruise is an ideal way to experience the hidden wonders of the South Pacific you previously thought only existed in the movies.

Vessel Features:

- Free Wi-Fi (where reception available)
- Day spa • Open air dining room
- Shaded sky deck bar and open air lounge and bar
- Splash pool • Guest laundry (self service)
- Lounge area

Cabin Features:

- Air-conditioning • Private ensuite
- In-room movies • Hair dryer • Television
- External windows with ocean views

Includes:

- Onboard accommodation
- All meals including tea, coffee, morning and afternoon tea and juice
- Complimentary mini bar (on the day of departure only) includes premium beer and soft drinks, French sparkling wine and snacks
- Complimentary sparkling wine with breakfast daily
- Gift of a tote bag per cabin and reusable drink bottle and sulu (sarong) per person
- Complimentary Malamala Beach Club Day Pass with FJD50 food and beverage credit per adult (3 and 7 night cruise)
- Sunset hour offering 25% off drinks and complimentary canapés (selected days)
- Captains Welcome with complimentary sparkling wine, local beers and canapés served between 6pm to 7pm
- Filtered mineral water stations throughout the vessel
- All scheduled cruise excursions and activities

- Entrance fees for all activities and village visits
- Traditional Fijian entertainment
- Snorkelling equipment and use of all watersports at Nanuya Lailai (4 and 7 night cruise)
- Ship to shore transfers • All port charges and taxes
- Transfers to/from Port Denarau to/from Nadi Airport or Nadi/Denarau/Wailoaloa hotel

Departure Information:

From Port Denarau

3 NIGHT EXPLORER CRUISE

Departs: Friday at 3pm
Returns: Monday at 3pm

4 NIGHT WANDERER CRUISE

Departs: Monday at 12:15pm
Returns: Friday at 10am

7 NIGHT ESCAPE TO PARADISE CRUISE

Departs: Friday at 3pm
Returns: Friday at 10am

Sole use and launch transfer prices from Mamanuca Island resorts also available. Family Cruise departures also available, ask your travel agent for details.



3 NIGHT EXPLORER CRUISE	
Day 1:	Depart Port Denarau to Modriki Island
Day 2:	Soso Bay
Day 3:	Naukacuvu Island
Day 4:	Sacred Isles and arrive Port Denarau

4 NIGHT WANDERER CRUISE	
Day 1:	Depart Port Denarau to Yalobi Bay
Day 2:	Blue Lagoon
Day 3:	Sawa-I-Lau Island
Day 4:	Drawaqa Island
Day 5:	Arrive Port Denarau

7 NIGHT ESCAPE TO PARADISE CRUISE	
Combine the 3 and 4 night cruise for a 7 Night Escape to Paradise Cruise	

	Adult
3 NIGHT	
Hibiscus Cabin	\$1782*[^]
Orchid Cabin	\$1976*[^]
4 NIGHT	
Hibiscus Cabin	\$2535*[^]
Orchid Cabin	\$2811*[^]
7 NIGHT	
Hibiscus Cabin	\$3900*[^]
Orchid Cabin	\$4377*[^]
[^]Price based on per person twin share.	

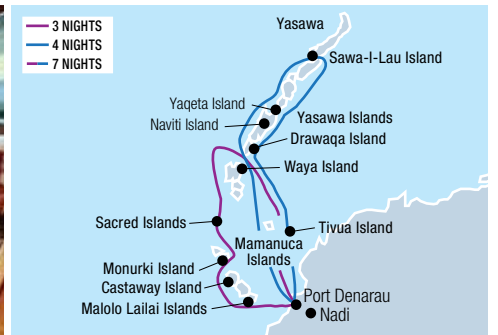
* FROM PRICES ARE A GUIDE ONLY, subject to change and availability and are in Australian Dollars. Prices are per person twin share, unless otherwise specified and based on the lowest room category and travel in low season. For full terms and conditions, refer to the Booking Conditions on the inside back cover of this brochure.



Lounge Sky Deck



Standard Suite



MS CALEDONIAN SKY – CAPTAIN COOK CRUISES

A new era in small ship luxury expeditions has begun in Fiji with the arrival of MS Caledonian Sky. Her arrival elevates and expands Captain Cook Cruises pioneering expeditions and will explore the most remote and beautiful parts of Fiji, Tonga and Samoa. With little contact with the outside world, cruising with Caledonian Sky will open up this unspoilt paradise to you with a new destination or two each day. Visiting places far off the beaten track, villages and schools, experiencing traditional ceremonies and more – you will go where other travellers cannot. Comprising of 57 exceptionally spacious, well designed suites with ocean views arranged over four decks, all suites afford considerable comfort with almost half offering a balcony.

Vessel Features:

- Free Wi-Fi (Library)
- Sun deck
- Lounges (2)
- Restaurant • Bars (2)
- Day spa/Hair salon • Gym
- Group child minding and activities
- Gift shop
- Guest library

Suite Features:

- Air-conditioning • Private ensuite
- Flat screen television • Walk-in shower and/or bath tub
- Mini-fridge • Safe • Hair dryer

Includes:

- Onboard accommodation
- All meals including 24 hour tea and coffee facilities
- Guided island, village, school and shore excursions
- Snorkelling tours
- Marine biologists, cultural experts and Ocean Ambassador program
- Tropical island lovo feast and kava ceremony
- Use of snorkelling equipment, kayaks and stand up paddle boards
- Entertainment
- Pick-up at selected island resorts (3 night cruise, Saturdays only)
- Drop-off to selected Nadi or Denarau accommodation after cruise

Departure Information:

From Port Denarau

3 NIGHT MAMANUCA & SOUTHERN YASAWA ISLANDS CRUISE

Departs: Saturday at 1pm

Returns: Tuesday at 9am

4 NIGHT NORTHERN YASAWA ISLANDS CRUISE

Departs: Tuesday at 1pm

Returns: Saturday at 9am

7 NIGHT MAMANUCA & YASAWA ISLANDS CRUISE

Departs: Tuesday and Saturday at 1pm

Returns: Tuesday and Saturday at 9am

7 Night Remote North Discovery, 7 Night Ultimate Lau & Kadavu, 7 Night Southern Lau & Kadavu, 11 Night Ultimate Lau and Kadavu Discovery, 14 Night Southern Lau & Tonga Whale Migration and 14 Night Northern Fiji and Samoa cruise prices also available. Sole use, triple share and child prices also available. Children under 7 years are not accepted. 7 Night Yasawa Islands Cruise is back to back 3 and 4 night cruises and between departures, free tours are available.

	Adult	Child 7-14 yrs
3 NIGHT		
Standard Suites (Forward)	\$3412* [^]	\$2559* [^]
Superior Suites	\$4033* [^]	\$3025* [^]
Premium Suites	\$4188* [^]	\$3141* [^]
Deluxe Balcony Suites	\$4654* [^]	\$3491* [^]
4 NIGHT		
Standard Suites (Forward)	\$4549* [^]	\$3412* [^]
Superior Suites	\$5377* [^]	\$4033* [^]
Premium Suites	\$5584* [^]	\$4188* [^]
Deluxe Balcony Suites	\$6204* [^]	\$4654* [^]
7 NIGHT		
Standard Suites (Forward)	\$7961* [^]	\$5970* [^]
Superior Suites	\$9409* [^]	\$7057* [^]
Premium Suites	\$9771* [^]	\$7329* [^]
Deluxe Balcony Suites	\$10,858* [^]	\$8143* [^]

[^]Price based on per person twin share.

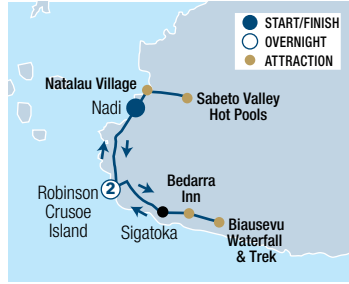
3 NIGHT MAMANUCA & SOUTHERN YASAWA ISLANDS CRUISE	
Day 1:	Depart Port Denarau to Nuku-I-Mana
Day 2:	Monuriki and Monu Bay
Day 3:	Sacred Islands and Waya Islands
Day 4:	Waya Islands to Port Denarau

4 NIGHT NORTHERN YASAWA ISLANDS CRUISE	
Day 1:	Depart Port Denarau to Tivua Island
Day 2:	Brothers Island and Naviti Island
Day 3:	Sawa-I-Lau
Day 4:	Yaqeta and Drawaqa
Day 5:	Arrive into Port Denarau

7 NIGHT MAMANUCA & YASAWA ISLANDS CRUISE	
Combine the 3 and 4 night cruise for a 7 Night Mamanuca and Yasawa Islands Cruise	

*FROM PRICES ARE A GUIDE ONLY, subject to change and availability and are in Australian Dollars. Prices are per person twin share, unless otherwise specified and based on the lowest room category and travel in low season. For full terms and conditions, refer to the Booking Conditions on the inside back cover of this brochure.

ISLAND ADVENTURES



FEEJEE BEACH & CULTURE 2 NIGHTS

Gaze and be amazed while trekking through tropical flat jungle, snorkelling with marine life or posing by the largest coastal waterfall. Dip in the healing comfort of hot mud pools and be authenticated at native villages, municipal markets and participate in a Fijian kava ceremony. This one's for the restless heart!

INCLUDES

- 2 nights accommodation at Robinson Crusoe Island
- Continental breakfast at Robinson Crusoe Island
- Lunch on day 1 and day 3
- Village visit – interact with locals and kids
- Sabeto thermal springs and mud pools
- Sigatoka market visit
- Biausevu Waterfall
- Tour guide and driver

DEPARTS Wed and Sat from Nadi at 9am

CONCLUDES Nadi at 6pm

	Adult twin share	Adult sole use
Guided Tour	\$967*[^]	\$1181*[^]

[^]Price includes compulsory meal plan and fee is payable direct to the resorts upon check-in.



SEA BREEZE ISLAND HOPPING 8 NIGHTS

Escape to the lush tropical islands of the Yasawas and Mamanucas in Fiji and discover the true meaning of paradise. Take your time discovering the crystal clear waters, white sandy beaches, stunning shores, and the colourful marine life of the underwater gardens.

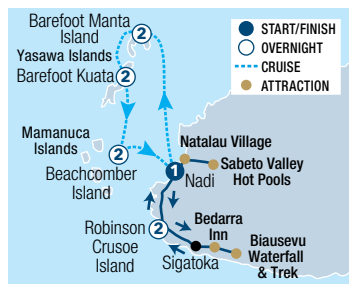
INCLUDES

- 6 nights 2½ to 3 star accommodation on the islands
- Pre and post accommodation in Nadi
- All meals on the islands
- Breakfast at Nadi hotel
- Select resort activities
- Tour guide and driver on the mainland of Viti Levu
- Transfers between accommodation

DEPARTS Daily from Nadi at 7am

CONCLUDES Nadi at 6pm

	Adult twin share
Independent Tour	\$2693*



FEEJEE FIVE 9 NIGHTS

Be spellbound on the party island of Beachcomber, the snorkelling haven of Barefoot Manta, Robinson Crusoe Island and Barefoot Kuata and add a truly authentic touch while swimming, snorkelling and swooning in Fiji's natural splendour and heritage for ten momentous days.

INCLUDES

- 9 nights 2½ to 3 star accommodation
- 2 breakfasts
- All meals on the islands
- Sabeto thermal springs & mud pools
- Sigatoka market visit
- Biausevu Waterfall
- Select resort activities
- Transfers between accommodation
- Tour guide and driver on the mainland

DEPARTS Wed and Sat from Nadi at 9am

CONCLUDES Nadi at 6pm

	Adult twin share	Adult sole use
Semi-guided Tour	\$3142*[^]	\$4177*[^]

[^]Price includes compulsory meal plans and fee is payable direct to the resorts upon check-in.

* FROM PRICES ARE A GUIDE ONLY, subject to change and availability and are in Australian Dollars. Prices are per person twin share, unless otherwise specified and based on the lowest room category and travel in low season. For full terms and conditions, refer to the Booking Conditions on the inside back cover of this brochure.



AVIS

Why not add Avis to your travel plans and make the most of your holiday by enjoying the flexibility and convenience that an Avis car rental provides. Avis Fiji is situated at five locations around Viti Levu and Vanua Levu, including a 24 hour service at Nadi International Airport. Offering a wide range of late model vehicles to choose from, all at great rates, renting with Avis is sure to make your holiday escape more enjoyable. All Avis vehicles are air-conditioned and come with 24 hour roadside assistance. Plus you get unlimited kilometres as well as free maps to help you find your destination.

Includes:

- Unlimited kilometres
- Loss Damage Waiver
- Taxes
- Administration fees
- All vehicles include air-conditioning

Does Not Include:

- Excess Reduction
- One way rental fees
- Stamp duty
- Concession Recovery Fee
- Delivery/collection fees for non-Avis locations
- Fuel
- Bond

Excess:

In the event of loss or damage, an Excess applies to all vehicles. Optional Excess Reduction can be purchased direct for an additional fee.

Based on per vehicle per day (24 hour hire period). Minimum age restrictions and age surcharges apply. A full driver's licence, credit card and security bond is required on collection. Tolls, fuel, additional driver and one way fees apply. An airport fee of FJD35 applies for all rentals picked up from Nadi Airport and Naisori Airport. Vehicles are subject to availability and a similar vehicle to those pictured may be substituted. Not all vehicles are available at all locations. Check with your travel agent for details.



- Overnight Bag
- Medium Suitcase
- Large Suitcase

TOYOTA YARIS (or similar)

GROUP B

- 4 door
- Auto
- 4 Cylinders
- 1,3 litre
- Radio/CD
- Driver's airbag



x4



1-2 DAYS	3-6 DAYS	7+ DAYS
-------------	-------------	------------

GROUP B \$110* \$108* \$92*

TOYOTA CAMRY (or similar)

GROUP G

- 4 Door
- Auto
- 4 Cylinders
- 2,4 litre
- Radio/CD
- Power windows
- Remote/central locking
- Dual airbags
- Cruise control



x5



1-2 DAYS	3-6 DAYS	7+ DAYS
-------------	-------------	------------

GROUP G \$142* \$138* \$116*

TOYOTA HIACE VAN (or similar)

GROUP P

- 4 Door
- Manual
- 4 Cylinders
- Radio
- Power windows
- Central locking
- Dual airbags



x8

Luggage capacity dependant on passenger numbers

1-2 DAYS	3-6 DAYS	7+ DAYS
-------------	-------------	------------

GROUP P \$164* \$159* \$135*

TOYOTA RAV4 (or similar)

GROUP K

- 4WD
- 4 Door
- Auto
- 4 Cylinders
- 2 litre
- Radio/CD
- Power steering
- Dual airbags



x5



1-2 DAYS	3-6 DAYS	7+ DAYS
-------------	-------------	------------

GROUP K \$176* \$169* \$145*

TOYOTA HILUX STANDARD (or similar)

GROUP L

- 4 Door
- Manual
- 4 Cylinders
- 2,4 litre
- Radio/CD
- Power steering
- Dual airbags



x5

Luggage capacity dependant on passenger numbers

1-2 DAYS	3-6 DAYS	7+ DAYS
-------------	-------------	------------

GROUP L \$196* \$191* \$154*

TOYOTA HILUX DUAL CAB (or similar)

GROUP D

- 4WD
- 4 Door
- Auto
- 4 Cylinders
- 2,8 litre
- Radio/CD
- Power steering
- Dual airbags



x5

Luggage capacity dependant on passenger numbers

1-2 DAYS	3-6 DAYS	7+ DAYS
-------------	-------------	------------

GROUP D \$234* \$227* \$193*

TOYOTA FORTUNER (or similar)

GROUP H

- 4WD
- 5 Door
- Auto
- 4 Cylinders
- 3 litre turbo diesel
- Radio/CD
- Remote/central locking



x5



1-2 DAYS	3-6 DAYS	7+ DAYS
-------------	-------------	------------

GROUP H \$276* \$267* \$241*

TOYOTA PRADO (or similar)

GROUP Z

- 5 Door
- Auto
- 4 Cylinders
- 3 litre
- Radio/CD
- Power steering
- Dual airbags



x5



No luggage capacity with 7 passengers

1-2 DAYS	3-6 DAYS	7+ DAYS
-------------	-------------	------------

GROUP Z \$305* \$295* \$269*

*FROM PRICES ARE A GUIDE ONLY, subject to change and availability and are in Australian Dollars. Prices are per vehicle per day, unless otherwise specified. For full terms and conditions, refer to the Booking Conditions on the inside back cover of this brochure.

TRANSFERS



AIRPORT TRANSFERS

Get your holiday off to a great start with a door to door shared coach transfer or arrive in style by private vehicle. Operating from Nadi Airport 24 hours a day, 7 days a week, Tourist Transport Fiji will ensure you are transferred to your hotel in air-conditioned comfort. All transfers include a personal meet and greet service with a traditional Fijian welcome and bottled water. Vehicles range from modern coaches to four seat private vehicles, 4WDs and mini vans. There is also a fleet of wheelchair accessible vehicles available for the mobility impaired.

So sit back, relax and enjoy the passing scenery.

	SHARE COACH		SHARE COACH – FAMILY	PRIVATE VEHICLE
	Per Person	Child#	Per Family 2 Adults & 2 Children#	Per Vehicle 1 to 4 People
Nadi Town/Wailoaloa Beach	\$32*^	\$16*^	\$92*^	\$69*^
Denarau Island (including Port)	\$39*^	\$20*^	\$104*^	\$96*^
DoubleTree by Hilton Fiji – Sonaisali Island	\$51*^	\$26*^	\$145*^	\$110*^
Vuda Marina/First Landing Resort/Anchorage	\$52*^	\$26*^	\$148*^	\$111*^
InterContinental+/Shangri-La Yanuca Island/Natadola Beach+	\$62*^	\$31*^	\$180*^	\$234*^
Outrigger Fiji/Bedarra Inn	\$66*^	\$33*^	\$180*^	\$258*^
Fiji Hideaway/Naviti/Tambua Sands/Warwick	\$72*^	\$36*^	\$210*^	\$288*^
Crusoes Retreat/Wellesley Resort	\$126*^	\$63*^	\$360*^	\$375*^
Pacific Harbour+	\$129*^	\$65*^	\$369*^	\$399*^
Rakiraki+/Volivoli Beach+	\$148*^	\$74*^	\$422*^	\$399*^
Suva+	\$148*^	\$74*^	\$420*^	\$474*^

^Price is based on one way to/from Nadi Airport. +Minimum 2 adults for Share Coach transfers. #Valid for children 2 to 12 yrs. Family transfers must be booked as a return transfer. Prices to other destinations and larger vehicles also available.

BULA! WELCOME TO FIJI.

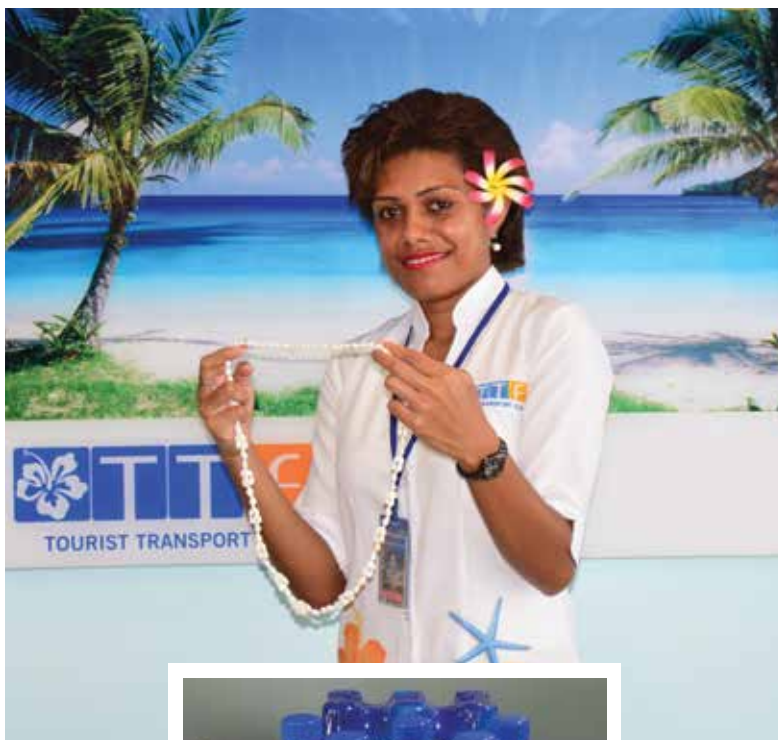
Our **EXCLUSIVE** meet and greet service will ensure your holiday gets off to a great start, with a warm Fijian welcome from someone who really knows the destination.

Just book one of our shared coach or private vehicle transfer options and on arrival in Fiji, make your way to the Airport Arrivals Office – it's open every day, 24 hours a day. There you'll find a friendly staff member to greet you with one of those famous Fijian smiles, check your travel arrangements and transfer you to your accommodation in air-conditioned comfort.

With our exclusive Meet & Greet Service, you'll receive:

- A traditional Fijian welcome with a **shell lei**
- Bottle of **Fiji water**

A warm welcome and a wonderful Fijian holiday awaits!



*FROM PRICES ARE A GUIDE ONLY, subject to change and availability and are in Australian Dollars. Prices are per person, unless otherwise specified and based on travel in low season. For full terms and conditions, refer to the Booking Conditions on the inside back cover of this brochure.



MALOLO CAT

Malolo Cat offers four scheduled launch transfers daily between Port Denarau and Malolo Lailai Island. Get off to a great start by cruising 50 minutes across the beautiful Fiji waters in comfort. The service includes a scheduled coach transfer from Nadi Airport, Nadi or Denarau accommodation to Port Denarau.

Private 24 hour transfers to/from Port Denarau also available.

	Adult	Child 2-11 yrs
Plantation Island Resort/ Lomani Island Resort/ Musket Cove Island Resort	\$79*[^]	\$40*[^]

[^]Price based on per person one way to/from Nadi Airport, Nadi, Denarau accommodation and Port Denarau.



24 HOUR WATER TAXI SERVICE

Mamanuca Express offers a comfortable 24 hour water taxi service between Port Denarau and all resorts throughout the stunning Mamanuca and lower Yasawa Islands in Fiji. This express speedboat transfers are perfect for flights that arrive outside of scheduled ferry service departures.

Prices for private transfers 5 people and above, shared transfers and inter-island transfers are also available.

	1 to 4 people
Treasure Island/Beachcomber Island/ Serenity Island	\$515*[^]
Castaway Island/Malolo Island/ Tropica Island Resort/Likuliku Lagoon Resort/Plantation Island Resort/ Musket Cove/Lomani Resort	\$735*[^]
Mana Island/Tokoriki Island/ Matamanoa Island/Vomo Island	\$886*[^]

[^]Price based on per boat one way to/from Port Denarau

SOUTH SEA CRUISES

South Sea Cruises offer seamless, fast transfers to the Mamanuca and Yasawa Island resorts. Scheduled transfers operate from Port Denarau several times a day, every day.

Modern catamarans with multiple lounges, outer viewing decks and fully licensed bars, mean you'll feel like you're on holiday before you even reach your destination.

Resort connections direct from Nadi Airport to Port Denarau are also available (extra charge). A courtesy coach pick-up is available from selected Nadi area, Wailoaloa area and Denarau accommodation to Port Denarau.

Prices from Nadi Airport and Captains Lounge with complimentary drinks and snacks is also available.

	Adult	Child 2-15 yrs
Treasure Island/ Beachcomber Island	\$95*[^]	\$56*[^]
Malolo Island/Castaway Island	\$102*[^]	\$63*[^]
Likuliku Lagoon Resort/ Tropica Island Resort	\$102*[^]	N/A
Mana Island	\$116*[^]	\$70*[^]
Barefoot Kuata/Waya Lailai/ Naqalia	\$130*[^]	\$78*[^]
Tokoriki Island	\$130*[^]	\$81*[^]
Matamanoa Island	\$130*[^]	N/A
Octopus	\$133*[^]	\$80*[^]
Mantaray/Barefoot Manta/ Paradise Cove/Korovou/ White Sandy Beach	\$140*[^]	\$84*[^]
Vomo Island	\$151*[^]	\$91*[^]
Navutu Stars/Long Beach/ Coral View/Coconut Beach/ Nanuya/Gold Coast/ Qarsmans/Blue Lagoon/ Nabua	\$154*[^]	\$92*[^]

[^]Price based on per person one way to/from Port Denarau and selected Denarau hotels.



FAST BOAT TRANSFERS

SeaFiji has built a strong reputation for its 24 hour fast boat transfer services between Port Denarau and the Mamanuca Islands. All vessels are fast, comfortable, fully licensed, purpose built craft powered by the latest technology engines and navigational systems. The connections let you maximise your time on the island and minimise travelling time.

Prices for private transfers 5 people and above, shared transfers and inter-island transfers are also available. A fuel surcharge per person is payable direct and varies per transfer region.

	1 to 4 People
Treasure Island/Beachcomber Island/ Serenity Island	\$358*[^]
Musket Cove/Plantation Island/ Lomani Resort/Tropica Island Resort/ Malolo Island/Likuliku Lagoon Resort/ Castaway Island/Mana Island	\$516*[^]
Matamanoa Island/Tokoriki Island/ Vomo Island	\$637*[^]

[^]Price based on per boat one way to/from Port Denarau.

TRANSFERS



HELICOPTER TRANSFERS

Fiji's premium helicopter and charter airline service specialises in efficient and reliable air transfers throughout Fiji. The Resort Express Service meets and greets all passengers and transfers guests to a private lounge offering complimentary cold beverages and Wi-Fi.

15kg baggage allowance per person. Other transfer locations also available.

	Adult
Treasure Island/Anchorage/First Landing	\$513* [^]
Plantation/Lomani/Musket Cove/DoubleTree by Hilton	\$554* [^]
Vomo Island/Tokoriki Island/Mana/Castaway/Likuliku/Matamanoa/Tropica	\$616* [^]
Intercontinental/Shangri-La	\$616* [^]

[^]Price based on per person one way, minimum 2 adults from Nadi Airport.



SEAPLANE TRANSFERS

Pacific Island Air flies direct from Nadi Airport to the Fijian island resorts.

20kg baggage allowance per person. Inter-island transfers prices also available.

	Adult	Child 2-12 yrs
Castaway Island/Musket Cove/Malolo Island/Plantation Island	\$411* [^]	\$288* [^]
Likuliku Island Resort/Lomani/Tropica Island Resort	\$411* [^]	N/A
Vomo Island	\$422* [^]	\$296* [^]
Mantaray Island Resort/Octopus Island Resort/Paradise Cove	\$493* [^]	\$493* [^]
Nanuya Island Resort/Blue Lagoon Beach Resort	\$534* [^]	\$534* [^]

[^]Price based on per person one way from Nadi Airport. Minimum 2 adults on scheduled service to Mamanuca Islands. Minimum 4 adults on service to Yasawa Islands.



HELICOPTER TRANSFERS

Pacific Island Air offers fast, efficient and reliable helicopter transfers to most resorts and islands in Fiji.

15kg baggage allowance per person. Inter-island transfers and other location prices also available.

	Adult	Child 2-12 yrs
Castaway Island/Musket Cove/Plantation Island/Treasure Island	\$493* [^]	\$345* [^]
Likuliku Island Resort/Lomani/Tropica Island Resort	\$493* [^]	N/A
Mana Island/Vomo Island/Matamanoa/Tokoriki Island	\$534* [^]	\$374* [^]
Barefoot Manta/Barefoot Kuata/Mantaray	\$493* [^]	\$493* [^]

[^]Price based on per person one way from Nadi Airport. Minimum 2 adults on scheduled service to Mamanuca Islands. Minimum 4 adults on service to Yasawa Islands.



EXPLORE THE REAL FIJI

Great Sight's Fiji offers a wide range of half day and full day tours that connect you with the rich culture and diverse scenery that Fiji is famous for. With a professional team of Drivers and Guides, Great Sight's Fiji ensures that you will have a memorable and authentic local experience.

For more information see the Great Sight's Fiji tours including 'Discover Nadi', 'Great Taste of Fiji', 'Thermal Mud Pool & Garden', 'Valley of a Thousand Hills', 'Coral Coast Heritage Tour' and 'Private Legend of Suva Tour' on page 17.





DISCOVER NADI

Explore the Garden of the Sleeping Giant, famous for its collection of orchids. Visit the chiefly village of Viseisei, the legendary landing site of the first Fijians. Continue into Nadi to the site of the largest Hindu temple in the South Pacific. Lastly, take in the colourful sights and friendly faces at the Nadi Market.

Includes:

- Garden of the Sleeping Giant tour
- Viseisei Village tour
- Nadi town and markets
- Sri Siva Subramaniya Swami Temple
- Expert guide
- Return transfers from Nadi and Denarau accommodation

Duration: 4 hours

Departs: Mon to Sat from Nadi at 8am

	Adult	Child 2-12 yrs
Half Day Tour	\$116*	\$58*



GREAT TASTE OF FIJI

Be prepared to step back in time on this inland safari exploration. Start at the feet of Nadi's famous 'Sleeping Giant' and head up past the canefields to the picturesque and peaceful Natalau Village. On arrival visitors are welcomed with a 'Sevusevu' or Kava ceremony. Get a taste of Fijian food by participating in the preparation and cooking of meals. There is the option of joining your guide for a brief walk through the village, preschool and the village gardens.

Includes:

- Village tour including entry fee
- Kava ceremony • Food tasting
- Transport by air-conditioned vehicle
- Return transfers from Nadi and Denarau accommodation

Duration: 4 hours

Departs: Mon to Fri from Nadi at 8am

	Adult	Child 2-12 yrs
Half Day Tour	\$109*	\$55*



THERMAL MUD POOL & GARDEN

Explore the Garden of the Sleeping Giant, famous for its collection of orchids and tropical plants. Your next stop is the Thermal Springs and Mud Pools, an array of natural pools to soothe your bones and cleanse the skin. On the return, stop roadside and sample tropical fruit or a cold coconut.

Includes:

- Garden of the Sleeping Giant tour
- Thermal Springs and Mud Pools
- Sabeto Valley surrounds
- Transport by air-conditioned vehicle
- Return transfers from Nadi and Denarau accommodation

Duration: 3 hours

Departs: Mon to Sun from Nadi

	Adult	Child 2-12 yrs
Half Day Tour	\$74*	\$37*



VALLEY OF A THOUSAND HILLS

Travel by 4WD up into the Nausori highlands. Visit the summit and take in the beauty of Viti Levu with uninterrupted views of the Mamanuca Island groups on the seaward side, and 'the valley of a thousand hills' inland. This tour offers a mixture of adventure, exploration and activity.

Includes:

- Valley of the thousand hills
- Transport by air-conditioned 4WD vehicle
- Seasonal fruits and Fiji water
- Return transfers from Nadi and Denarau accommodation

Duration: 4 hours

Departs: Mon to Sat from Nadi at 8:20am

	Adult	Child 2-12 yrs
Half Day Tour	\$84*	\$42*



CORAL COAST HERITAGE TOUR

Explore one of Fiji's most famous tourist regions - the Coral Coast. Renowned for its amazing shoreline, the Coral Coast has plenty to offer and this tour covers all the highlights. Take in the amazing view over the Mamanuca Island Group from the World War II Momi Battery. Visit Lomawai Village – the home of salt making. Finish off the day with a short 20 minute walk in the rainforest to Biausevu Waterfall.

Includes:

- World War II Momi Battery, Lomanwai Village, Biausevu Waterfall • Experienced driver/guide
- Transport by air-conditioned vehicle
- Lunch at Bedarra Beach Resort
- Return transfers from Nadi and Denarau accommodation

Duration: 8 hours

Departs: Mon to Sat from Nadi at 8am

	Adult	Child 2-12 yrs
Full Day Tour	\$252*	\$126*



PRIVATE LEGEND OF SUVA TOUR

Enjoy a scenic drive tour to Suva. On arrival visit old Parliament house for a photo opportunity outside the building. Next head to Baery gun site at Nasonini Tunnels. Stop for lunch at the Museum themed restaurant—the Governors. After lunch continue on to Fiji Museum then into the city for some shopping before returning to your hotel.

Includes:

- Fiji Museum • Thurston Garden
- Historical site of Baery - WW2
- Transport by air-conditioned 4WD vehicle
- Light lunch
- Return transfers from Nadi and Denarau accommodation

Duration: 10 hours

Departs: Mon to Sat from Nadi at 7:30am

	1 to 4 People
Private Full Day Tour	\$853*^
^Price based on per vehicle.	

*FROM PRICES ARE A GUIDE ONLY, subject to change and availability and are in Australian Dollars. Prices are per person, unless otherwise specified and based on travel in low season. For full terms and conditions, refer to the Booking Conditions on the inside back cover of this brochure.

TOURS



ESSENCE TRAVEL LOUNGE

Refresh, relax and rest while in transit at Fiji Airport. Located only three minutes from the Nadi International Airport, Essence Travel Lounge offers a wide range of services for the whole family including lounge areas, day spa, float therapy, showers, movie room, free Wi-Fi, licensed café, Fiji-made boutique and more!

Includes:

- Access to lounge facilities
- Local Nama sorbet
- Free Wi-Fi
- Luggage storage, showers and lockers
- Cleansing foot ritual
- 30 minute back massage (Transit Pass)
- FJD100 spa voucher (Premium Transit Pass)

Open: 6am – 8pm daily

Child prices also available.

	Adult
Transit Pass	\$42*
Premium Transit Pass	\$117*



SIGATOKA RIVER SAFARI

Experience the natural beauty of the Sigatoka River on this uniquely Fijian adventure. On board a custom built safari jet boat, travel to authentic Fijian villages and experience a day in the life of the real 'kaiviti' (Fijian) and participate in a traditional kava ceremony.

Includes:

- 40 minute safari jet boat cruise
- Kava ceremony
- Safari sulu (sarong) for women
- Tropical Fijian lunch
- Return transfers from selected Coral Coast accommodation

Duration: 4 hours 30 minutes

Departs: Mon to Sat from Sigatoka Town at 8:45am

Other Tour Options:

Tour from Nadi/Denarau **\$261*** per adult, **\$131*** per child, Self Drive **\$223*** per adult, **\$112*** per child.

	Adult	Child 4-15 yrs
Half Day Tour	\$246*	\$124*



FIJI UNTOLD

Be part of an enriching traditional performance with a contemporary twist told through song and dance. The FIJI UNTOLD show will captivate your senses with its Energy! Spirit! Mana! The journey begins with an enticing performance that will awaken your senses and lead you into a state-of-the-art Big Top where you leave with a deeper understanding of Fiji's myths and legends.

Includes:

- World class Broadway style performance and captivating dances
- Choice of one non-alcoholic beverage
- Return transfers from Nadi and Denarau accommodation

Duration: 3 hours

Departs: Thu and Sun from Nadi at 7pm

	Adult	Child 2-12 yrs
Cultural Show	\$84*	\$49*



OFF-ROAD CAVE SAFARI

This journey of discovery, rich in history, shows first-hand Fiji's largest cave system, the Naihehe Cave. Your guide will share their knowledge of the rich history of the region and the sacred caves.

Includes:

- 4 hour 30 minute off-road cave tour
- Transport by ATV vehicle • Naihehe Cave tour and contribution • Safari sulu (sarong) for women
- Barbecue lunch • Kava ceremony
- Return transfers from selected Coral Coast accommodation

Duration: 4 hours 45 minutes

Departs: Mon to Sat from Sigatoka Town at 8:45am

Other Tour Options:

Tour from Nadi/Denarau **\$238*** per adult, **\$120*** per child. Self Drive **\$201*** per adult, **\$101*** per child.

Family prices also available.

	Adult	Child 4-15 yrs
Half Day Tour	\$223*	\$112*



ZIPLINE TOUR

ZipFiji is an amazing adventure with five kilometres of zip lines woven into a truly spectacular setting of incredible caves, canyons and breathtaking ocean views. Highly trained guides instruct how to use special equipment and techniques to experience 16 jaw dropping zip lines. This amazing adventure lets you fly higher, faster and longer than ever before on this world-class zip line.

Includes:

- 16 zip lines
- Safety equipment
- Light refreshments
- Return transfers from Nadi accommodation

Duration: 3 hours

Departs: Daily from Nadi at 9am, 2pm

Children aged 3-12 years must be accompanied by parent/guardian.

	Adult/Child
Half Day Tour	\$172*



CLOUD 9 DAY TRIP

Cloud 9 is Fiji's first and original two level floating platform with an internationally stocked bar and Italian wood-fired pizzeria, surrounded by turquoise blue water and picturesque views. Cloud 9 is laid-back and naturally classy, with a fun atmosphere, sun deck, day beds and a surround sound system throughout to create the perfect soundtrack for a magical day.

Includes:

- FJD60 food and beverage credit
- Return boat transfer from Port Denarau to Cloud 9
- Return transfers from Denarau & Nadi hotels, DoubleTree by Hilton Sonaisali

Duration: 5 hours

Departs: Daily from Port Denarau at 9am and 1pm

Not suitable for children under 10 yrs.

	Adult	Child 10-15 yrs
Half Day Tour	\$150*	\$135*



MALAMALA BEACH CLUB

Malamala Beach Club boasts white sand beaches, a resort-style infinity edge pool and views across the stunning Mamanuca Islands. Only 25 minutes from Port Denarau by catamaran, guests are invited to sit back and relax in the club-like atmosphere.

Includes:

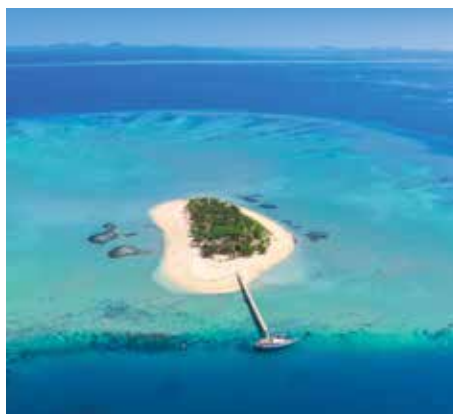
- Free use of towels (one per person)
- Free Wi-Fi
- Free use of non-motorised watersports
- Return launch transfers from Port Denarau
- Return coach transfers from Nadi, Denarau and Coral Coast accommodation

Duration: 6 – 7 hours

Departs: Daily from Port Denarau at 9:30am, Coral Coast from 7:25am

Returnee and Cabana prices also available.

	Adult/Child
Day Pass	\$134*
Day Pass with Poolside Day Bed	\$162*



TIVUA ISLAND DAY CRUISE

Set sail to Tivua Private Island for a day of adventure aboard Ra Marama, a historic Brigantine rig tall ship. Explore coral gardens, enjoy a guided snorkelling tour or glass bottom boat tour.

Includes:

- Cruise to Tivua Private Island
- Fijian cultural entertainment
- Use of canoes and stand-up paddle boards
- Morning and afternoon tea
- Barbecue lunch
- Beer, wine and soft drink while on the island
- Return transfers from selected Nadi and Denarau accommodation

Duration: 7 hours

Departs: Daily from Port Denarau at 10am

Transfers from the Coral Coast accommodation also available.

	Adult	Child 3-15 yrs
Full Day Tour	\$175*	\$109*



TIVUA PRIVATE PARADISE

Enjoy a deluxe half day island experience on Tivua Island and relish the vast expanse of uncrowded aqua-blue water and white sand as you swim, snorkel, paddle or simply relax in your own private cabana.

Includes:

- Welcome glass of Champagne
- Light brunch with a small bottle of Champagne
- Glass bottom boat tour with Marine Biologist
- Return high speed boat transfers from Port Denarau

Duration: 3 hours 30 minutes

Departs: Wed, Fri to Sun from Port Denarau at 8am

Minimum of 15 passengers required for tour to operate.

	Adult	Child 3-15 yrs
Morning Tour	\$342*	\$244*



SOUTH SEA SAILING

Sail around the idyllic Mamanuca Islands on a unique sailing catamaran and visit uninhabited sand cays and untouched coral reefs abundant with marine life. Each journey offers a unique sailing experience dependent on the warm tropical breezes and sea conditions.

Includes:

- Welcome mimosa or sparkling wine
- Morning tea
- Gourmet buffet lunch with beer and wine (for 2 hours)
- Unlimited non-alcoholic beverages
- Use of snorkelling equipment
- Return coach transfers from Nadi, Denarau and Coral Coast accommodation

Duration: 7 hours

Departs: Daily from Port Denarau at 9:45am, Coral Coast from 7:10am

Children under 8 yrs not permitted on cruise.

	Adult	Child 8-15 yrs
Full Day Tour	\$191*	\$97*



SOUTH SEA ISLAND DAY CRUISE

Discover Fiji's most popular day cruise destination. Explore the crystal clear waters teeming with magnificent coral and fish life surrounding this pretty island, just 30 minutes from Port Denarau.

Includes:

- Full day on South Sea Island
- Barbecue lunch
- Beer, wine and soft drinks on the island
- Use of non-motorised watersports
- Return launch transfers
- Return transfers from selected Nadi, Denarau and most Coral Coast accommodation

Duration: 7 – 8 hours

Departs: Daily from Port Denarau at 10am, Coral Coast accommodation from 7:25am

Half day, Finding Nemo and Combo cruise prices also available.

	Adult	Child 5-15 yrs
Full Day Tour	\$183*	\$94*



SUNSET DINNER CRUISE

Cruise around the stunning bay on Fiji One into a beautiful Pacific Island sunset. Enjoy a delicious barbecue dinner of fish, steak and chicken served with salads, followed by dessert. Fijian cultural entertainment and spectacular scenery round off a perfect evening on the water.

Includes:

- Fijian cultural entertainment
- Welcome drink
- Tropical buffet dinner
- Return transfers from Nadi and Denarau accommodation

Duration: 3 hours

Departs: From Port Denarau, Tue to Sun at 5pm (May – Sep), Tue to Sun at 5:30pm (Oct – Apr)

	Adult	Child 3-15 yrs
Dinner Cruise	\$123*	\$70*

NADI & SURROUNDS

Nadi is the gateway to the spectacular island and coastal regions of Fiji. Visit local shops and markets or Fiji's second largest city, Lautoka.

SEE

- Visit the Sri Siva Subramaniya Temple in Nadi Town
- See the impressive orchid collection at the Garden of the Sleeping Giant

DO

- Browse the local markets, including the Nadi Produce and Handicraft Markets
- Indulge in a therapeutic thermal mud spa at the Sabeto Thermal Mud Pool and Hot Springs

EAT & DRINK

- Sample Indo-Fijian food at one of Nadi's curry houses

WHAT'S ON

Bula Festival

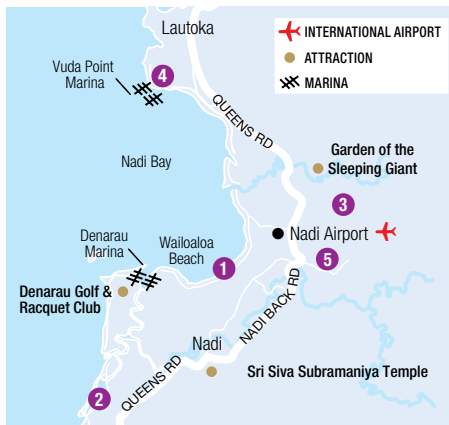
July or August (dates to be confirmed)

Sugar Festival, Lautoka

September (dates to be confirmed)



Sri Siva Subramaniya Temple



Nadi Market

REF.	HOTELS	PAGE
1	Crowne Plaza Fiji Nadi Bay Resort & Spa	22
2	DoubleTree Resort by Hilton Fiji – Sonaisali Island	21
3	Fiji Gateway Hotel	20
4	First Landing Beach Resort and Villas	21
1	Ramada Suites Wailoaloa Beach Fiji	21
5	Tanoa International Hotel	20

FIJI GATEWAY HOTEL



Queens Road, Nadi Airport
MAP PAGE 20

From **\$202***

- ❖ Recently refurbished, iconic hotel located opposite the airport
- ❖ Two pools and a tennis court with free use of racquets and balls
- ❖ Palm Court Restaurant open for breakfast, lunch and dinner

Location: Situated opposite Nadi International Airport and eight kilometres from Nadi Town. Distances: Nadi Airport 500m, Beach 8km.

Getting There: Free return transfers from Nadi Airport.

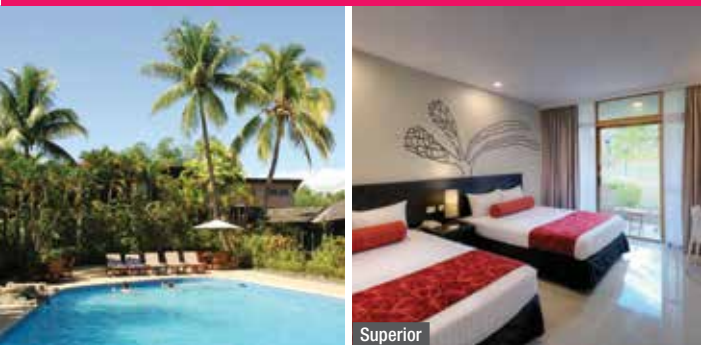
Property Features: Free Wi-Fi (common areas), Pools (2), Spa, Restaurant, Café, Bar, 24 hour room service, Gym, Tennis court, Waterslide, Resort shop, Parking (free), 95 rooms.

Room Features: Wi-Fi (extra charge), Air-conditioning, Tea/coffee making facilities, In-room movies (free), Cable TV, Hair dryer.

Max Capacity: Deluxe/Pool View – 3, Deluxe Family – 5, Suite – 2.



TANO INTERNATIONAL HOTEL



Votualevu Road, Nadi Airport
MAP PAGE 20

From **\$307***

- ❖ Five dining options including the 24 hour Garden Court Restaurant
 - ❖ Two floodlit tennis courts
 - ❖ Nightly entertainment in the Bula Bar
- Includes full breakfast daily.**

Location: Located three minutes from Nadi International Airport and a 15 minute drive to Nadi's main shopping centre. Distances: Nadi Airport 3km, Beach 15km.

Getting There: Free return transfers from Nadi Airport.

Property Features: Pool, Restaurants (3), Bar, Day spa, Gym, Tennis court (floodlit), Resort shop, Guest laundry, 24 hour reception, Parking (free), 148 rooms.

Room Features: Air-conditioning, Balcony or patio, Tea/coffee making facilities, Ironing facilities, Hair dryer, Safe.

Max Capacity: Superior/Family – 3 adults or 2 adults/2 children, Executive – 2.



DOUBLETREE RESORT BY HILTON FIJI – SONAISALI ISLAND



Beachfront Guestroom

Naisali Island, Sonaisali
MAP PAGE 20

From **\$325***

- ❖ Beachfront resort
- ❖ Family friendly resort with kid's club and children's playground
- ❖ Signature Sweet Dreams by DoubleTree bedding in all rooms

Includes full breakfast daily.

Location: A three minute boat ride from the main island of Viti Levu and a 25 minute drive from Nadi International Airport. Distances: Beachfront, Nadi Airport 20km.

Getting There: We recommend airport transfers be booked in conjunction with your accommodation. See page 14 for further details.

Property Features: Free Wi-Fi (common areas), Pool, Restaurants (2), Bars (3), Day Spa, 24 hour room service, Kids club 3-12 years (free), 120 rooms.

Room Features: Wi-Fi (extra charge), Air-conditioning, Balcony or terrace, Refrigerator, Tea/coffee making facilities, Smart TV, Cable TV, Ironing facilities, All rooms non smoking.

Max Capacity: Beachfront Guestroom – 2 adults/2 children, Beachfront Bure/Ocean View Bure – 3, Double King Beachfront Bure/Ocean View Bure – 4 adults or 2 adults/ 2 children.



FIRST LANDING BEACH RESORT AND VILLAS



Vuda Point, via Lautoka
MAP PAGE 20

From **\$366***

- ❖ Families will love the Nalamu Nipper Kids Club and kids' meals available
- ❖ Admire spectacular sunsets daily from the resort
- ❖ Watch a movie under the stars at the open air cinema

Includes light breakfast daily and welcome fruit drink on arrival.

Location: Set on the white sands of Nalamu Beach at Vudu Point. Distances: Beachfront, Nadi Airport 15km.

Getting There: We recommend airport transfers be booked in conjunction with your accommodation. See page 14 for further details.

Property Features: Free Wi-Fi (common areas), Pool, Restaurant, Café, Bar, Room service, Day spa, Kids club 3-14 years (free), 34 rooms.

Room Features: Air-conditioning, Fan, Balcony or terrace, Tea/coffee making facilities, Kitchen (Garden Villa 2 Bedroom, Beach Villa 2 Bedroom, Royal Beachfront Villa, Nalamu Grand Beach Villa), Cable TV (Deluxe Garden Bure and Villas), Hair dryer, Safe.

Max Capacity: Garden Bure/Deluxe Garden Bure/Ocean Spa Bure/1 Bedroom Garden Villa – 3 adults or 2 adults/2 children. Other room types also available.



RAMADA SUITES WAILOALOA BEACH FIJI



King Studio Suite

Wailoaloa Beach, Nadi Bay
MAP PAGE 20

From **\$375***

- ❖ Absolute beachfront property
- ❖ Great for families with all rooms having limited cooking facilities
- ❖ Stunning views of Nadi Bay from rooftop restaurant – Club 57

Includes a welcome drink.

Location: Centrally located between Nadi International Airport and Nadi town and a 10 minute drive from Denarau Island. Distances: Beachfront, Nadi Airport 9km.

Getting There: Free return transfers from Nadi Airport.

Property Features: Pools (2 – 1 lap, 1 children's), Bar (rooftop), Bistro (rooftop), Restaurant, Room Service, Beach deck dining, Senikai Day spa, Gym, Lift, Children's playground, Convenience Store, Parking (free), 40 rooms.

Room Features: Air-conditioning, Ocean view, Balcony, Kitchen, Laundry facilities, Cable TV, In-room movies, Safe, Hair dryer, All rooms non smoking.

Max Capacity: King Studio Suite – 2, 1 Bedroom Beachfront Suite – 4, 2 Bedroom Beachfront Suite/2 Bedroom Ocean View Suite – 6.



*FROM PRICES ARE A GUIDE ONLY, subject to change and availability and are in Australian Dollars. Prices are per room per night for 2 people, unless otherwise specified and based on the lowest room category for travel in low season. For full terms and conditions, refer to the Booking Conditions on the inside back cover of this brochure.

NADI & SURROUNDS ACCOMMODATION

CROWNE PLAZA FIJI NADI BAY RESORT & SPA



Wailoaloa Beach, Nadi Bay
MAP PAGE 20

From **\$419***

- ❖ Brand new beachfront resort and spa located on picturesque Wailoaloa Beach
- ❖ Three pools – Kids pool, family pool and adults-only pool with swim up bar
- ❖ Select rooms have direct beach and pool access
- ❖ Excellent for families with Kids and Teen Club access and generously-sized family rooms and 2 bedroom suites (some with bunk beds)
- ❖ Wide range of dining options - from Pan Asian – Italian and a Beach Bar

Includes full breakfast daily.

Location: Situated on Nadi Bay's Wailoaloa beachfront, approximately a 15 minute drive from Nadi Airport and Denarau Island. Distances: Beachfront, Nadi Airport 9km.

Getting There: We recommend airport transfers be booked in conjunction with your accommodation. See page 14 for further details.

Property Features: Pools (3 – including adults only), Restaurants (4), Bars (3 – including swim-up), Day spa, Gym, Beach club, Kids and Teens club, Shops, Watersports, 324 rooms.

Room Features: Air-conditioning, Fan, Balcony or patio, Tea/coffee making facilities, Smart TV, Hair dryer, Safe.

Max Capacity: 2 Bedroom Family Suite – 2 adults/2 children, 2 Bedroom Suite – 4 adults or 2 adults/2 children, 1 Bedroom King Suite/1 King Junior Suite – 2 adults/1 child. Other room types also available.



Family Suite – Lounge



1 King Junior Suite



*FROM PRICES ARE A GUIDE ONLY, subject to change and availability and are in Australian Dollars. Prices are per room per night for 2 people, unless otherwise specified and based on the lowest room category for travel in low season. For full terms and conditions, refer to the Booking Conditions on the inside back cover of this brochure.



Sofitel Fiji Resort & Spa



REF.	HOTELS	PAGE
1	Hilton Fiji Beach Resort & Spa	24
2	Radisson Blu Resort Fiji Denarau Island	25
3	Sofitel Fiji Resort & Spa	26



Denarau Golf & Racquet Club



Bula Bus

DENARAU ISLAND

A short drive from Nadi, Denarau Island is easily accessible by a causeway separating the island from Viti Levu. Cruise ships sail into the picturesque harbour while tall ships whisk guests away to the nearby Mamanuca and Yasawa Islands for swimming and snorkelling.

SEE

- See colourful coral and tropical fish in the cool blue waters on a day tour to South Sea Island or Castaway Island
- Watch the vivid colours of a Fiji sunset from Denarau Beach

DO

- Play a round of golf at Denarau Golf and Racquet Club
- Beat the heat and enjoy the thrills of the giant waterslides at Big Bula Waterpark

EAT & DRINK

- Head to Port Denarau institution, Cardo's Streakhouse and wind down in the evening with cold drinks and delicious steak and seafood

WHAT'S ON

Ocean Swim Fiji
27 to 31 May

DENARAU ISLAND ACCOMMODATION

HILTON FIJI BEACH RESORT & SPA



Denarau Island
MAP PAGE 23

From **\$508***

- ❖ Beachfront resort with seven outdoor pools
- ❖ Kids will love the Ika Kids Club
- ❖ Koro is the exclusive adults only area featuring two beachfront pools, a bar, all day dining and live entertainment

Includes full breakfast daily.

Location: Located on 2.5 kilometres of beach on Denarau Island. The resort is a 10 minute drive from the centre of Nadi and a 20 minute drive from Nadi Airport. Distances: Beachfront, Nadi Airport 14km.

Getting There: We recommend airport transfers be booked in conjunction with your accommodation. See page 14 for further details.

Property Features: Free Wi-Fi (common areas), Pools (7 – including adults only and family zones), Restaurants (3), Bar, Deli, KORO (adults only area – free), 24 hour room service, Kids club 3-12 years (free), Day spa, Gym, Parking (free), 346 rooms.

Room Features: Wi-Fi (extra charge), Air-conditioning, Balcony, Limited cooking facilities (except Guestroom), Barbecue (except Guestroom), Cable TV, DVD player, Washer/dryer (except Guestroom).

Max Capacity: Beachfront Guestroom – 2, Garden View Guestroom/1 Bedroom Garden View/1 Bedroom Beachfront – 3, 2 Bedroom Garden View/2 Bedroom Beachfront/2 Bedroom Beachfront Residence/Penthouse – 5. Other room types also available.



FLYING WITH FIJI AIRWAYS?

Check-in for your Fiji Airways flight from the comfort of the resort. Boarding passes are issued, bags tagged and transported securely to the airport, giving you more time to enjoy the resort before you leave for the airport. At the airport, bypass check-in and head straight to security and immigration.



Garden View Guestroom

*FROM PRICES ARE A GUIDE ONLY, subject to change and availability and are in Australian Dollars. Prices are per room per night for 2 people, unless otherwise specified and based on the lowest room category for travel in low season. For full terms and conditions, refer to the Booking Conditions on the inside back cover of this brochure.

RADISSON BLU RESORT FIJI DENARAU ISLAND



Chantara Restaurant

Denarau Island
MAP PAGE 23

From **\$687***

- ❖ Beachfront resort with a private beach and a Waterfall Lawn
- ❖ Four lagoon pools with dedicated adults only pool and kids pool with slide
- ❖ Plenty of non-motorised watersports available for hire
- ❖ Great resort for families with a kids club and suites with cooking facilities
- ❖ Wide range of dining options – 5 restaurants and 2 specialty dining experiences

Includes full breakfast daily.

Location: On Fiji's largest resort island and boasting upscale beachfront accommodation just 25 minutes from Nadi International Airport. Distances: Beachfront, Nadi Airport 16km.

Getting There: We recommend airport transfers be booked in conjunction with your accommodation. See page 14 for further details.

Property Features: Pools (4 – including adults only), Restaurants (5), Bars (3 – 1 swim-up), Harmony Retreat Spa (day spa), 24 hour room service, Kids club 4-12 years (extra charge), Nanny service 0-12 years (extra charge), 270 rooms.

Room Features: Air-conditioning, Fan, Balcony or courtyard, Limited cooking facilities with microwave and dishwasher (1 and 2 Bedroom Suites), Cable TV, In-room movies, Ironing facilities, Washer/dryer (1 and 2 Bedroom Suites), Hair dryer, Safe.

Max Capacity: Standard Garden View/Superior Lagoon View – 2 adults/1 child, Deluxe Courtyard Twin – 2 adults/2 children, 1 Bedroom Garden View Suite/1 Bedroom Lagoon View Suite – 2 adults or 2 adults/3 children, 2 Bedroom Garden View Suite/2 Bedroom Lagoon View Suite – 6 adults or 4 adults/3 children. Other room types also available.



Standard Garden View



*FROM PRICES ARE A GUIDE ONLY, subject to change and availability and are in Australian Dollars. Prices are per room per night for 2 people, unless otherwise specified and based on the lowest room category for travel in low season. For full terms and conditions, refer to the Booking Conditions on the inside back cover of this brochure.

DENARAU ISLAND ACCOMMODATION

SOFITEL FIJI RESORT & SPA



Waitui Bar & Grill



Niu Beach Club – Kids Club

Denarau Island
MAP PAGE 23

From **\$738***

- ❖ Beachfront location with lagoon style swimming pool
- ❖ Family friendly facilities including kids club with zipline and splash park
- ❖ Four restaurants including the signature beachfront restaurant, Solis
- ❖ Home to Denarau's late night venue – Republik Night Club
- ❖ Waitui Beach Club – an adults only sanctuary located within the resort

Includes full breakfast daily.

Location: On Denarau Island, just 20 minutes' drive from Nadi International Airport.
Distances: Beachfront, Nadi Airport 15km.

Getting There: We recommend airport transfers be booked in conjunction with your accommodation. See page 14 for further details.

Property Features: Pools (3 – 1 lagoon, 1 children's, 1 adults only), Spa, Restaurants (4), Bars (4), Kids Beach Club 3-12 years (extra charge), Teen Zone 8-16 years, Sofitel Spa, Sofitel Salon, Use of non-motorised watersports (free), Fitness centre, Resort shops (5), 24 hour reception, 298 rooms.

Room Features: Air-conditioning, Balcony or patio, Mini bar, Tea/coffee making facilities, Cable TV, In-room movies (free), Bathrobes.

Max Capacity: Luxury/Waitui Beach Club/Waitui Plus Beach Club/Prestige Suite – 2, Family Room/Luxury Family/Family Suite – 2 adults/2 children.



FLYING WITH FIJI AIRWAYS?

Check-in for your Fiji Airways flight from the comfort of the resort. Boarding passes are issued, bags tagged and transported securely to the airport, giving you more time to enjoy the resort before you leave for the airport. At the airport, bypass check-in and head straight to security and immigration.



Luxury Room

* FROM PRICES ARE A GUIDE ONLY, subject to change and availability and are in Australian Dollars. Prices are per room per night for 2 people, unless otherwise specified and based on the lowest room category for travel in low season. For full terms and conditions, refer to the Booking Conditions on the inside back cover of this brochure.



Shangri-La Yanuca Island, Fiji



REF.	HOTELS	PAGE
1	Fiji Hideaway Resort & Spa	28
2	InterContinental Fiji Golf Resort & Spa	31
3	The Naviti Resort	28
4	Outrigger Fiji Beach Resort	32
5	Shangri-La Yanuca Island, Fiji	30
6	Warwick Fiji	29
7	Yatule Resort & Spa	29



Sigatoka River Safari



Outrigger Fiji Beach Resort

CORAL COAST

The Coral Coast, located on the southern coast of Viti Levu, has always been a firm favourite for couples and families. Here you will find palm-fringed beachfront resorts, stunning surf beaches and an array of cultural and fun outdoor activities to suit everyone. The coastline is a combination of bays, beaches, rocky outcrops and mangrove forests. The surfing on the Coral Coast's reef breaks is sensational, but for non-surfers, there are numerous other water activities to enjoy. Swim, snorkel or take to the open ocean in search of game fish including tuna, wahoo and sailfish.

SEE

- Visit the Sigatoka Sand Dunes National Park, home to an extensive dune system and archaeological site dating back 3000 years
- See endangered native species like the peregrine falcon and crested iguana at Fiji's only wildlife park, Kula Wild Adventure Park

DO

- Take a thrilling jetboat adventure to the heart of Fiji's main island with a Sigatoka River Safari
- Visit the markets around the Sigatoka Valley for fresh fruit and vegetables, the area is known as 'Fiji's salad bowl'

WHAT'S ON

Coral Coast Festival

September (dates to be confirmed)

Uprising Festival of Music, Dance & Lights

October (dates to be confirmed)

CORAL COAST ACCOMMODATION

FIJI HIDEAWAY RESORT & SPA



Frangipani Bure

Queens Road, Korolevu
MAP PAGE 27

From **\$300***

- ❖ Families will love the Hermit Crab Kids Club and the children's wading pool
- ❖ Experienced surfers can paddle out from the resort to a nearby surf break
- ❖ Beachfront resort with a colourful coral reef ideal for snorkeling

Includes breakfast daily and welcome drink on arrival.

Location: On 600 metres of sandy beach along the Coral Coast. Distances: Beachfront, Nadi Airport 85km.

Getting There: We recommend airport transfers be booked in conjunction with your accommodation. See page 14 for further details.

Property Features: Free Wi-Fi (common areas), Pool, Restaurant, Café, Bar, Nightly entertainment, Kids club 4-12 years (free), Day Spa, 115 rooms.

Room Features: Air-conditioning, Balcony/patio, Refrigerator, Tea/coffee making facilities, Ironing facilities, Hair dryer, Safe.

Max Capacity: Frangipani Bure/Oceanview Bure/Beachfront Villa/2 Bedroom Deluxe Beachfront Bure – 4, Deluxe Oceanview/Deluxe Beachfront Bure – 2.



Beachfront Villa



THE NAVITI RESORT



Garden View

Queens Road, Korolevu
MAP PAGE 27

From **\$451***

- ❖ The resort overlooks a calm lagoon
- ❖ Kids will love the Ratu & Adi Vonu Kids Club
- ❖ Resort offers all-inclusive packages with meals, drinks and select activities

Includes full breakfast daily and welcome drink on arrival.

Location: On the beach midway between Nadi and the Fijian capital Suva on the Coral Coast. Distances: Beachfront, Nadi Airport 90km.

Getting There: We recommend airport transfers be booked in conjunction with your accommodation. See page 14 for further details.

Property Features: Golf course (9 hole), Pool, Spa, Restaurants (4), Bars (2 – 1 swim-up), Room service, Kids club 5-12 years (free), Joy Spa (day spa), Gym, Laundry, Use of non-motorised watersports, 220 rooms.

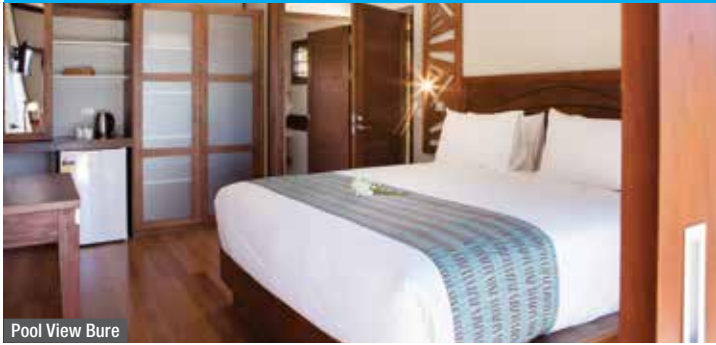
Room Features: Air-conditioning, Balcony or patio, Tea/coffee making facilities, Cable TV, Ironing facilities.

Max Capacity: Garden View/Ocean View/Suite – 3 adults or 2 adults/2 children, Studio Villa – 2, 1 Bedroom Oceanfront Villa – 3, Superior Garden View – 2 adults/3 children.



* FROM PRICES ARE A GUIDE ONLY, subject to change and availability and are in Australian Dollars. Prices are per room per night for 2 people, unless otherwise specified and based on the lowest room category for travel in low season. For full terms and conditions, refer to the Booking Conditions on the inside back cover of this brochure.

YATULE RESORT & SPA



Pool View Bure

Queens Highway, Natadola
MAP PAGE 27

From **\$399***

- ❖ Direct access to the famous white sands of Natadola Beach
 - ❖ Play a round of golf at the nearby Natadola Bay Golf Course
 - ❖ Signature restaurant, NA UA has exquisite views of Natadola Beach
- Includes breakfast daily, welcome drink, cool towel and lei on arrival.**

Location: On white sands overlooking the blue lagoon of Natadola Beach. The resort is just under an hour drive from Nadi Airport. Distances: Beachfront, Nadi Airport 54km.

Getting There: We recommend airport transfers be booked in conjunction with your accommodation. See page 14 for further details.

Property Features: Free Wi-Fi (common areas), Pool, Restaurant, Bars (2), Spa Vishala (day spa), Parking (free), 39 rooms.

Room Features: Wi-Fi (extra charge), Air-conditioning, Refrigerator, Tea/coffee making facilities, Ironing facilities, Hair dryer, Safe.

Max Capacity: Pool View Bure/Beachfront Bure – 2, Deluxe Ocean View Bure/Deluxe Beachfront Bure – 3, Executive 3 Bedroom Villa – 6.



WARWICK FIJI



Garden View

Queens Road, Korolevu
MAP PAGE 27

From **\$555***

- ❖ Perfect for families with complimentary kid's club and daily activities
 - ❖ Take part in the Coral Viewing/Glass Bottom Boat Trip (weather permitting)
 - ❖ Indulge at Warwick Spa, overlooking the stunning lagoon
- Includes full buffet breakfast daily.**

Location: On absolute beachfront along the Coral Coast, midway between Nadi Airport and the capital city of Suva. Distances: Beachfront, Nadi Airport 102km.

Getting There: We recommend airport transfers be booked in conjunction with your accommodation. See page 14 for further details.

Property Features: Pools (2), Restaurants (6), Bars (6), Room service, Kids club 3-12 years (free), Warwick Spa (day spa), Gym, Tennis courts (4), Squash courts (2), Hair salon, 24 hour reception, Non smoking, Parking (free), 247 rooms.

Room Features: Air-conditioning, Balcony, Tea/coffee making facilities, Cable TV, Ironing facilities, Hair dryer, Safe.

Max Capacity: Garden View/Ocean View – 3 adults or 2 adults/2 children, Superior Garden View – 2 adults/3 children, Warwick Club – 2, Suite – 2 adults/2 children.



*FROM PRICES ARE A GUIDE ONLY, subject to change and availability and are in Australian Dollars. Prices are per room per night for 2 people, unless otherwise specified and based on the lowest room category for travel in low season. For full terms and conditions, refer to the Booking Conditions on the inside back cover of this brochure.

CORAL COAST ACCOMMODATION

SHANGRI-LA YANUCA ISLAND, FIJI



Yanuca Island
MAP PAGE 27

From **\$424***

- ❖ Great for families with an inflatable water park, kids club and pool
- ❖ Nine hole golf course designed by Peter Thompson
- ❖ Choose from five restaurants and three bars
- ❖ Three swimming pools
- ❖ Couples will love the adults only Reef Wing accommodation with private access to an adult only infinity pool

Includes full buffet breakfast daily.

Location: On Fiji's Coral Coast on the 109 acre private island of Yanuca. The island is linked by a causeway to the mainland and is a 50 minute drive from Nadi International Airport and 10 minutes from the Sigatoka Sand Dunes National Park. Distances: Beachfront, Nadi Airport 60km.

Getting There: We recommend airport transfers be booked in conjunction with your accommodation. See page 14 for further details.

Property Features: Chapel, Golf course (9 hole), Pools (3), Restaurants (5), Bars (3), 24 hour room service, Kids club 4-11 years (free), CHI, The Spa (day spa), Non-motorised watersports, Tennis courts (2), Gym, Mini golf, Resort shop, Guest laundry, 443 rooms.

Room Features: Air-conditioning, Balcony or patio, Tea/coffee making facilities, Cable TV, Ironing facilities, Hair dryer, Bathrobes and slippers.

Max Capacity: Ocean Deluxe King/Ocean Deluxe Twin/Ocean Terrace/Yanuca Lagoon Deluxe/Yanuca Lagoon Terrace/Yanuca Lagoon Grand Deluxe – 3 adults or 2 adults/ 2 children, Ocean Grand Deluxe – 3 adults or 2 adults/3 children, Yanuca Lagoon Suite – 2 adults/3 children, Yanuca Lagoon 1 Bedroom Bure – 2 adults/2 children, Reef Bure/ Reef Deluxe Twin – 2, Reef Deluxe King/Reef Grand Deluxe/Reef Suite – 3, Yanuca Lagoon 2 Bedroom Bure – 4 adults or 2 adults/4 children.



Ocean Deluxe King



* FROM PRICES ARE A GUIDE ONLY, subject to change and availability and are in Australian Dollars. Prices are per room per night for 2 people, unless otherwise specified and based on the lowest room category for travel in low season. For full terms and conditions, refer to the Booking Conditions on the inside back cover of this brochure.

INTERCONTINENTAL FIJI GOLF RESORT & SPA



Club InterContinental

Natadola Bay, Natadola
MAP PAGE 27

From **\$609***

- ❖ Play a round of golf on the 18 hole championship course
- ❖ Three swimming pools including an adults only infinity pool, a family pool and a pool at Club InterContinental
- ❖ Free use of non-motorised watersports for one hour per person per day
- ❖ Opt for a Club suite to enjoy the added benefits of Club InterContinental
- ❖ Nightly entertainment at the Karma Lounge including traditional Fijian and South Pacific entertainment

Includes full breakfast daily.

Location: Nestled on the pristine white sand beach of Natadola Bay, just under 1 hour drive away from Nadi International Airport. Distances: Beachfront, Nadi Airport 50km.

Getting There: We recommend airport transfers be booked in conjunction with your accommodation. See page 14 for further details.

Property Features: Pools (3), Golf course (18 hole), Restaurants (3), Bars (4), 24 hour room service, Nightly entertainment, Kids club 4-12 years (extra charge), Nanny service (extra charge), Day spa, Gym, Laundry/dry cleaning service, 24 hour reception, 266 rooms.

Room Features: Air-conditioning, Balcony/Terrace, Mini bar, Tea/coffee making facilities, Smart TV, In-room movies (pay to view), Ironing facilities, Outdoor Cleopatra bath.

Max Capacity: Garden View/Lagoon View/Pool View/Beachfront/Beachfront Suite/Lagoon View Suite/1 Bedroom Club Suite/1 Bedroom Club Suite Plunge – 3, Garden View Double – 3 adults or 2 adults/2 children, 2 Bedroom Club Suite/2 Bedroom Club Suite Plunge/Natadola Suite – 6.



Garden View King



*FROM PRICES ARE A GUIDE ONLY, subject to change and availability and are in Australian Dollars. Prices are per room per night for 2 people, unless otherwise specified and based on the lowest room category for travel in low season. For full terms and conditions, refer to the Booking Conditions on the inside back cover of this brochure.

CORAL COAST ACCOMMODATION

OUTRIGGER FIJI BEACH RESORT



Queens Highway, Sigatoka
MAP PAGE 27

From **\$493***

- ❖ Family friendly with kid's club, teen activity program and MeiMei nanny child minding service
- ❖ Fijian cultural activities, entertainment and non-motorised watersports
- ❖ Two pools including a lagoon pool with water slide and an adults only pool with swim-up pool bar and lap pool
- ❖ Nightly sunset torch lighting ceremony
- ❖ Stay in an Ocean View Room, Premium Ocean View Room, Suite or Bure and enjoy personalised Talai Butler service

Includes welcome drink and cool towel on arrival.

Location: On the Coral Coast just one hour and 20 minutes from Nadi Airport. Nearby attractions include the Kula WILD Adventure Park, Sigatoka Sand Dunes and the Sigatoka River Safari. Distances: Beachfront, Nadi Airport 80km.

Getting There: We recommend airport transfers be booked in conjunction with your accommodation. See page 14 for further details.

Property Features: Pools (2 – 1 lagoon, 1 adults only), Restaurants (5), Bars (5 – 1 swim-up), Café, 24 hour room service, Kids Club 3-12 years (free), Nanny service (extra charge), Bebe Spa (day spa), Gym, Use of snorkelling equipment and non-motorised watersports (free), Tennis courts (2 – floodlit), Yoga and meditation (free), Nightly entertainment, Outrigger Adventure Park (Golf driving range, Archery and Paintball), 24 hour reception, 253 rooms.

Room Features: Air-conditioning, Fan, Balcony or verandah, Hammocks (Bure), Mini bar, In-room movies (pay to view), Cable TV, Ironing facilities, Bathrobes, Hair dryer.

Max Capacity: Resort View/Ocean View/Beachfront Bure – 3 adults or 2 adults/2 children, Premium Ocean View King – 2 adults/1 infant, Plantation Bure/Ocean Breeze Bure/ 1 Bedroom Suite – 3 adults or 2 adults/3 children, 2 Bedroom Family Suite – 6 adults or 4 adults/5 children, Family Plantation Bure – 6 adults or 4 adults/6 children.



Resort View

* FROM PRICES ARE A GUIDE ONLY, subject to change and availability and are in Australian Dollars. Prices are per room per night for 2 people, unless otherwise specified and based on the lowest room category for travel in low season. For full terms and conditions, refer to the Booking Conditions on the inside back cover of this brochure.



Mamanuca Islands

Tourism Fiji



MAMANUCA & YASAWA ISLANDS

The Mamanuca and Yasawa Islands are one of the most idyllic destinations in Fiji. Lift the lid on the reef-fringed beaches and uncover well established island resorts, coral cays and uninhabited volcanic atolls perfect for a romantic picnic. The white sands and quintessential swaying palm trees are the main attractions of the islands, where diving and snorkelling are a must for water lovers.

SEE

- Take in spectacular 360 degree island and water views from the lookout on Vomo Island
- Visit the majestic Sawa-I-Lau limestone caves, considered the heart of the Yasawas

DO

- Surfers should not miss surfing at Cloudbreak, known to have some of the best surf breaks in the world
- Kids will love learning about Fiji culture and the turtle breeding program at Treasure Island
- Learn to cook Fijian cuisine in a cooking class at one of the island resorts

WHAT'S ON

Fiji Regatta Week

11 to 15 September

Mana Swim Festival

October (dates to be confirmed)

REF.	HOTELS	PAGE
1	Beachcomber Island Resort	34
2	Castaway Island, Fiji	34
3	Lomani Island Resort	36
4	Mana Island Resort & Spa – Fiji	36
5	Mantaray Island Resort	39
6	Matamanoa Island Resort	37
3	Musket Cove Island Resort	37
3	Plantation Island Resort	35
7	Tokoriki Island Resort	38
8	Treasure Island Resort	37
9	Vomo Island	39
10	Yasawa Island Resort & Spa	39



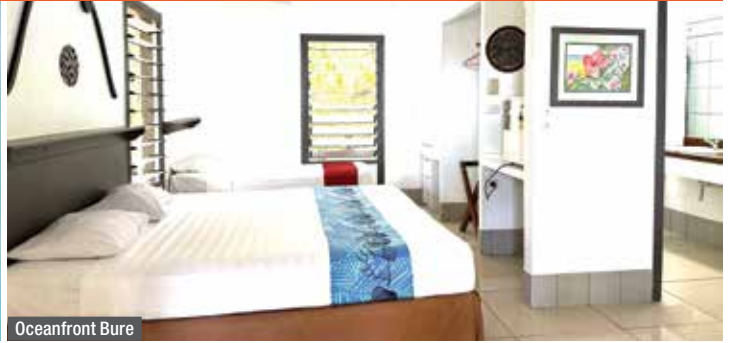
Musket Cove, Mamanuca Islands

MAMANUCA ISLANDS ACCOMMODATION

BEACHCOMBER ISLAND RESORT



Private Lodge



Oceanfront Bure

Beachcomber Island
MAP PAGE 33

From **\$349***

- ❖ Secluded island resort great for relaxing or for those who enjoy watersports
- ❖ Complimentary daily coral viewing, fish feeding and snorkelling trips
- ❖ Learn to dive in the PADI training facility

Includes buffet breakfast, morning tea and afternoon tea, lunch and dinner daily.

Location: Set on a marine sanctuary in the heart of the Mamanuca Islands.
Distances: Beachfront.

Getting There: From Nadi Airport by coach/launch via Port Denarau. See page 15 for details.

Property Features: Free Wi-Fi (common areas), Pool, Restaurant, Bar, Kiosk, Day spa, Laundry service, PADI dive centre, Use of kayaks, paddle boards, Boutique, Convenience store, 53 rooms.

Room Features: Air-conditioning (Sunset Room and Beachfront Bure), Fan (Private Lodge and Oceanfront Bure), Tea/coffee making facilities, All rooms non smoking.

Max Capacity: Private Lodge – 2, Sunset Rooms – 3, Oceanfront Bure/Beachfront Bure – 4.



CASTAWAY ISLAND, FIJI



Island Bure



Castaway Island, Fiji
MAP PAGE 33

From **\$874***

- ❖ Family friendly with a family pool, family rooms and kid's club
- ❖ Quiet zone pool with swim up pool bar and jacuzzi
- ❖ Free guided island walk and guided sunset kayak trips

Includes welcome drink on arrival and weekly management cocktail party.

Location: Set on a private island in the heart of Fiji's Mamanuca Islands, surrounded by white sand beaches and vibrant coral reefs. Distances: Beachfront.

Getting There: From Nadi Airport by coach/launch via Port Denarau or by helicopter. See pages 15 to 16 for details.

Property Features: Free Wi-Fi (common areas), Pools (2), Restaurants (4), Bars (4), Kids club 3-12 years (free), Nanny service (extra charge), Massage facilities, Dive centre, Tennis court, Table tennis, Resort shop, Guest laundry, 24 hour reception, 65 rooms.

Room Features: Air-conditioning, Fan, Balcony/patio, Tea/coffee making facilities, Refrigerator, Bathrobes, Hair dryer, Safe.

Max Capacity: Island Bure/Ocean View Bure/North Beach Bure/South Beach Bure – 5, Grand Bure – 6, Family Beach Bure – 10.



* FROM PRICES ARE A GUIDE ONLY, subject to change and availability and are in Australian Dollars. Prices are per room per night for 2 people, unless otherwise specified and based on the lowest room category for travel in low season. For full terms and conditions, refer to the Booking Conditions on the inside back cover of this brochure.

PLANTATION ISLAND RESORT



Coconut Kids Club



Malolo Lailai Island
MAP PAGE 33

From **\$448***

- ❖ Family friendly resort with a variety of accommodation options
- ❖ Kids will love the inflatable waterpark and Coconut Kids Club!
- ❖ Four freshwater pools to enjoy
- ❖ Black Coral Grill offers fresh seafood and meat which can be cooked on a unique volcanic stone
- ❖ Coral conservation program available for guests offers coral planting, kids talks and fish house making

Includes welcome drink and shell lei on arrival.

Location: Absolute beachfront resort nestled on the island of Malolo Lailai, offering kilometres of white, sandy beach overlooking a sheltered lagoon. It is a 50 minute boat ride or 10 minute flight from Nadi. Distances: Beachfront.

Getting There: From Nadi Airport by coach/launch via Port Denarau or by helicopter or seaplane. See pages 15 to 16 for details.

Property Features: Free Wi-Fi (common areas), Pools (4 – 1 lagoon, 1 waterslide), Golf course (9 hole), Restaurants (3), Bars (2), Inflatable water park (5-16 years), Kids club 4-12 years (free), Teens club 13-16 years (free), Nanny service (extra charge), Playgrounds (3), Day spa, Tennis court, Basketball court, Bicycle hire, Hammocks, Resort shop, Convenience store, Hair salon, Guest laundry, Use of non-motorised watersports (free), Fijian cultural activities, Coral conservation program (free), 195 rooms.

Room Features: Wi-Fi (extra charge), Air-conditioning, Fan, Balcony or patio, Tea/coffee making facilities, Refrigerator, Safe, All rooms non smoking.

Max Capacity: Garden/Poolside/Studio Garden Bure/Beachfront Bure – 4 adults/1 child, Beachfront Hotel – 4, 2 Bedroom Garden Bure – 6.



Garden



*FROM PRICES ARE A GUIDE ONLY, subject to change and availability and are in Australian Dollars. Prices are per room per night for 2 people, unless otherwise specified and based on the lowest room category for travel in low season. For full terms and conditions, refer to the Booking Conditions on the inside back cover of this brochure.

MAMANUCA ISLANDS ACCOMMODATION

LOMANI ISLAND RESORT



Deluxe Suite



Beachfront Pool Bure

Malolo Lailai Island
MAP PAGE 33

From **\$761***

- ❖ Exclusive adults only boutique resort, perfect base for relaxation or adventure
- ❖ Join the free dolphin safari, daily guided snorkelling and village tours
- ❖ All rooms boast ocean views and beach access

Includes full breakfast daily, welcome drink and shell lei on arrival.

Location: On Malolo Lailai Island, in the Mamanuca Islands to the west of Fiji's main island Viti Levu. Distances: Beachfront.

Getting There: From Nadi Airport by coach/launch via Port Denarau or by helicopter or seaplane. See pages 15 to 16 for details.

Property Features: Pool (lagoon), Restaurant, Bar, Room service, Lomani Spa (day spa), Gym, Use of snorkelling equipment and non-motorised watersports, 30 rooms.

Room Features: Private plunge pool (Beachfront Pool Bure), Ocean views, Air-conditioning, Balcony or patio, Refrigerator, Television, Bathrobes, Hair dryer.

Max Capacity: Deluxe Suite – 3, Beachfront Bure/Beachfront Pool Bure – 2.



MANA ISLAND RESORT & SPA – FIJI



Island Bure



Beachfront Bure

Mana Island
MAP PAGE 33

From **\$665***

- ❖ Two freshwater pools – an infinity edge and an adults only pool
- ❖ Family friendly resort with a kid's club and nanny service
- ❖ Promotes sustainability through turtle conservation and tree and coral planting

Includes breakfast and dinner daily.

Location: A comfortable 90 minute trip from Port Denarau, the island is adorned with white sandy beaches and crystal blue rich coral waters. Distances: Beachfront.

Getting There: From Nadi Airport by coach/launch via Port Denarau or by helicopter. See pages 15 to 16 for details.

Property Features: Wi-Fi (common areas – extra charge), Restaurants (5), Bars (4), Pools (2 – 1 family, 1 adults only infinity edge), Room service, Tennis courts, Kids club 3-12 years (extra charge), Nanny service (extra charge), Mana Spa (day spa), Gym, 160 rooms.

Room Features: Air-conditioning, Balcony or patio, Refrigerator, Safe.

Max Capacity: Island Bure – 3 adults or 2 adults/3 children, Ocean View Room – 3 adults or 2 adults/2 children, Deluxe Ocean View Bure – 4 adults or 2 adults/4 children. Beachfront Bure – 2. Other room types also available.



* FROM PRICES ARE A GUIDE ONLY, subject to change and availability and are in Australian Dollars. Prices are per room per night for 2 people, unless otherwise specified and based on the lowest room category for travel in low season. For full terms and conditions, refer to the Booking Conditions on the inside back cover of this brochure.

MAMANUCA ISLANDS ACCOMMODATION

MATAMANOIA ISLAND RESORT



Resort

Matamanoia Island
MAP PAGE 33

From **\$490***[^]

- ❖ Secluded adults only resort
- ❖ Private plunge pools in the Beachfront Villas and Beachfront Bures
- ❖ Unique treetop spa

Includes full breakfast daily.

Location: Set in the Mamanuca Islands approximately 30 kilometres west of Nadi International Airport. Distances: Beachfront.

Getting There: From Nadi Airport by coach/launch via Port Denarau or by helicopter. See pages 15 to 16 for details.

Property Features: Pool, Spa, Restaurant, Bar, Day spa, Tennis court, Nightly entertainment, Boutique, Laundry service, 47 rooms.

Room Features: Private plunge pool (Bure and Villa), Outdoor shower (Bure and Villa), Ocean views, Air-conditioning, Fan, Patio, Tea/coffee making facilities, Mini bar (on request), Bathrobes, Hair dryer.

Max Capacity: Resort – 2, Beachfront Bure/Beachfront Villa – 3.

[^]Minimum 3 night stay applies.



MUSKET COVE ISLAND RESORT



Garden Bure

Malolo Lailai Island
MAP PAGE 33

From **\$742***^{*}

- ❖ Perfect resort for active couples and families
- ❖ Enjoy a drink at the Yacht Club Island Bar, an iconic sand between the toes bar
- ❖ Hire a bike and explore the resort's sandy paths

Includes breakfast, lunch and dinner daily, and arrival refreshment.

Location: Set in the Mamanuca Islands on Malolo Lailai, this resort is only a 60 minute cruise from Port Denarau. Distances: Beachfront.

Getting There: From Nadi Airport by coach/launch via Port Denarau or by helicopter or seaplane. See pages 15 to 16 for details.

Property Features: Free Wi-Fi (designated areas), Pool, Golf course (9 hole – adjacent), Restaurant, Bars (3), Café, Makare Day Spa, Marina, PADI dive centre, Nanny service (extra charge), Daily activities, 55 rooms.

Room Features: Wi-Fi (extra charge), Air-conditioning, Fan, Hammocks (Garden and Beach Bure), Limited cooking facilities with microwave (Villa), Hair dryer.

Max Capacity: Garden Bure – 3 adults or 2 adults/2 children, Lagoon Bure/2 Bedroom Island Villa – 4, Beach Bure – 3, 2 Bedroom Garden Villa – 5.



TREASURE ISLAND RESORT



Oceanview Bure

Treasure Island
MAP PAGE 33

From **\$646***^{*}

- ❖ Iconic resort, great for families, couples and honeymooners
- ❖ Traditional cultural activities including Kava Ceremony
- ❖ Kids will love the Little Treasures Kids Club

Includes light breakfast daily.

Location: Located west of Nadi, on a coral cay in the Mamanuca Island group. The island is one of the closest island resorts to Nadi International Airport. Distances: Beachfront.

Getting There: From Nadi Airport by coach/launch via Port Denarau or by helicopter or seaplane. See pages 15 to 16 for details.

Property Features: Wi-Fi (common areas), Beachfront wedding chapel, Pool, Restaurants (3), Bar, Café, Kids club 4-11 years (free), Senikai Spa (day spa), Mini golf, Tennis court, Use of non-motorised watersports and snorkelling equipment, Daily environmental program, Games room, Nightly entertainment, 78 rooms.

Room Features: Wi-Fi (extra charge), Air-conditioning, Balcony, Hair dryer, Safe.

Max Capacity: Oceanview Bure – 4, Premium Oceanview Bure/Premium Beachfront Bure – 5.



*FROM PRICES ARE A GUIDE ONLY, subject to change and availability and are in Australian Dollars. Prices are per room per night for 2 people, unless otherwise specified and based on the lowest room category for travel in low season. For full terms and conditions, refer to the Booking Conditions on the inside back cover of this brochure.

MAMANUCA ISLANDS ACCOMMODATION

TOKORIKI ISLAND RESORT



Tokoriki Island
MAP PAGE 33

From **\$2037**^{**}

- ❖ Boutique adults only resort
- ❖ Romantic beach holiday for couples and honeymooners
- ❖ Complimentary use of stand-up paddle boards, kayaks and hobie cats
- ❖ Arrange an island beach picnic to the nearby Monu Island
- ❖ PADI Dive facility to discover the underwater life
- ❖ Cultural activities include village visits, local markets and kava ceremony

Includes welcome drink, cool towel and lei on arrival, afternoon tea daily and cocktail tasting and canapés every Tuesday, Thursday and Saturday.

Location: Set in the Mamanuca group of islands and easily accessed from Nadi. Enjoy a stunning 15 minute scenic helicopter or seaplane flight from Nadi International Airport or a one hour speedboat from Port Denarau. Distances: Beachfront.

Getting There: From Nadi Airport by coach/launch via Port Denarau or by helicopter. See pages 15 to 16 for details.

Property Features: Free Wi-Fi (designated area), Chapel, Pools (2), Restaurants (2), Bar, Day spa, Boutique, Tennis court, Exercise platform, Evening entertainment, Dive centre, Reading bure with books and board games, Use of snorkelling equipment and non-motorised activities (free), 36 burees and villas.

Room Features: Plunge pool (Beachfront Pool Bure, Beachfront Pool Villa), Ocean views, Air-conditioning, Fan, Patio, Hammocks, Personalised mini bar (extra charge), Bathrobes, Hair dryer, Indoor and outdoor showers, Safe, All rooms non smoking.

Max Capacity: Beachfront Bure/Beachfront Pool Bure – 3, Beachfront Pool Villa – 2.

[^] Minimum 2 night stay applies.



Beachfront Pool Villa



Beachfront Bure



*** FROM PRICES ARE A GUIDE ONLY**, subject to change and availability and are in Australian Dollars. Prices are per room per night for 2 people, unless otherwise specified and based on the lowest room category for travel in low season. For full terms and conditions, refer to the Booking Conditions on the inside back cover of this brochure.

MAMANUCA & YASAWA ISLANDS ACCOMMODATION

VOMO ISLAND



Hillside Villa

Vomo Island
MAP PAGE 33

From **\$1716***^

- ❖ A private luxury island boutique resort set on 255 acres
- ❖ Adults only area with bar and infinity pool at the Vomo Rocks Pool
- ❖ Families will love the 4 hours of free babysitting daily and Kids Village

Includes breakfast, lunch, dinner daily, laundry service, escorted snorkel safari daily and weekly managers cocktail party.

Location: A private island escape situated in the Mamanuca Islands, at the cusp of the Yasawa Islands. Distances: Beachfront.

Getting There: From Nadi Airport by coach/launch via Port Denarau or by helicopter or seaplane. See pages 15 to 16 for details.

Property Features: Pools (2), Golf course (9 hole), Restaurants (2), Bars (2), Kids club 3-12 years (free), Day spa, Use of non-motorised watersports (free), 34 rooms.

Room Features: Air-conditioning, Patio, Mini bar (free – excluding alcoholic beverages), Tea/coffee making facilities, Daily laundry service (free).

Max Capacity: Hillside Villa/Beachfront Villa/Beachfront Haven – 3 adults or 2 adults/ 2 children, Beachfront Family Retreat Villa – 3 adults/1 child or 2 adults/3 children.

^Minimum 2 night stay applies.



MANTARAY ISLAND RESORT



Reef Bure

Nanuya Balavu Island
MAP PAGE 33

From **\$693***

- ❖ Great resort for active families and couples with many water activities
- ❖ Cultural activities and excursions are available
- ❖ Only resort on Nanuya Balavu Island

Includes breakfast, lunch and dinner daily.

Location: Set on the island of Nanuya Balavu in the Naviti group of the Yasawa Islands. Distances: Beachfront.

Getting There: From Nadi Airport by coach/launch via Port Denarau or by helicopter or seaplane. See pages 15 to 16 for details.

Property Features: Wi-Fi (common areas – extra charge), Restaurant, Bar, Sundeck, Nightly entertainment, Scuba and Freediving School, Laundry service, 18 rooms.

Room Features: Wi-Fi (extra charge), Air-conditioning (except Seaside Bure and Treehouse Bure), Balcony or patio, Tea/coffee making facilities, Outdoor shower (except Seaside Bure), Non smoking.

Max Capacity: Treehouse Bure/Reef Bure – 2, Seaside Bure/Family Reef Bure – 3, Beachfront Villa – 4.



YASAWA ISLAND RESORT & SPA



Bure Suite

Yasawa Island
MAP PAGE 33

From **\$1801***^

- ❖ 11 private white sand beaches
- ❖ All inclusive resort with all meals, snacks, non-alcoholic beverages
- ❖ Cultural activities include village visits and kava ceremony

Includes all meals and non-alcoholic beverages daily, private beach picnics and return flight transfer from Nadi to Yasawa Island (for two guests).

Location: This private island resort is located at the top of the Yasawa Island group. Distances: Beachfront.

Getting There: From Nadi Airport to Yasawa Island Resort & Spa via a direct flight.

Property Features: Free Wi-Fi (common areas), Pool, Spa, Restaurant, Bar, Room service, Kids Club 4-14 years operating during Family Weeks, Day spa, Tennis court, Use of motorised and non-motorised watersports (free), 18 burees.

Room Features: Private plunge pool (Lomalagi Honeymoon Bure), Absolute beachfront, Air-conditioning, Fan, Balcony or patio, Mini bar, Docking station, Outdoor shower.

Max Capacity: Bure Suite/Deluxe Beachfront Bure – 3 adults or 2 adults/2 children, Lomalagi Honeymoon Bure – 3. Other room types also available.

^Minimum 3 night stay applies. Children are only permitted to stay during family weeks.



*FROM PRICES ARE A GUIDE ONLY, subject to change and availability and are in Australian Dollars. Prices are per room per night for 2 people, unless otherwise specified and based on the lowest room category for travel in low season. For full terms and conditions, refer to the Booking Conditions on the inside back cover of this brochure.

REGIONAL FIJI

Get off the beaten track and experience the real Fiji in regional areas on the mainland or the Northern Islands. On Vanua Levu, coconut plantations and lush rainforest beg to be explored while Savusavu is a multicultural town set in beautiful surroundings. Taveuni is known as the Garden Isle, perfect for relaxation and adventure. Suva is Fiji's bustling capital and for the right blend of white sandy beaches, endless sunshine and coral reefs, head to Rakiraki on the Suncoast.

SEE

- Take in spectacular views of Tavoro Falls, Fiji's most iconic waterfalls on Taveuni Island

DO

- Tour the J Hunter Pearl Farm in Savusavu Bay and purchase one of their renowned pearls
- Dive the reefs off Rakiraki and see turtles, colourful coral and reef sharks

EAT

- In Savusavu, learn about the art of chocolate making on the Kokomana Chocolate tour and enjoy a delicious chocolate tasting session

WHAT'S ON

Friendly North Festival

October (dates to be confirmed)

Savusavu Festival Week

November (dates to be confirmed)



Savasi Island Resort, Savusavu



Tavoro Falls, Taveuni Island

REF.	HOTELS	PAGE
1	Jean-Michel Cousteau Resort Fiji, Savusavu	41
1	Koro Sun Resort & Rainforest Spa, Savusavu	41
2	Paradise Taveuni	41
1	Savasi Island Resort, Savusavu	41
3	Tanoa Plaza Hotel, Suva	40
4	Volivoli Beach Resort, Rakiraki	40

TANOA PLAZA HOTEL, SUVA



Superior Room

Corner Gordon and Malcolm Street, Suva
MAP PAGE 40

From **\$369***

- Recently refurbished hotel with bright and modern rooms and amenities
 - Central city location
 - Enjoy a selection of 'Pacific Rim' cuisine at the hotel's on-site restaurant
- Includes full breakfast daily.**

Location: Set in the heart of Suva city, just a short walk to shops and markets. Distances: Town centre 250m, Suva Airport 25km.

Getting There: We recommend airport transfers be booked in conjunction with your accommodation. See page 14 for further details.

Property Features: Pool, Restaurant, Bar, Laundry/dry cleaning service, 60 rooms.

Room Features: Air-conditioning, Satellite television, Refrigerator, Tea/coffee making facilities, Ironing facilities, Hair dryer, Safe.

Max Capacity: Superior Queen/Executive Suite/Executive Queen – 2 adults/1 child, Superior King/Executive King – 2.



VOLIVOLI BEACH RESORT, RAKIRAKI



Ocean View Room

Volivoli Road, Rakiraki, Viti Levu
MAP PAGE 40

From **\$362*^**

- Boutique beachfront family-run resort
 - Friendly Fijian hospitality
 - Great for active guests with an exciting range of watersports
- Includes welcome drink and resort orientation.**

Location: A relaxed beachfront resort, just a two and half hour scenic coastal drive from Nadi International Airport on the northern most point of Viti Levu. Distances: Beachfront, Nadi Airport 143km.

Getting There: We recommend airport transfers be booked in conjunction with your accommodation. See page 14 for further details.

Property Features: Wi-Fi (common areas – extra charge), Pool, Restaurant (2), Bars (2 – 1 swim-up), Day spa, Dive shop, Fishing charters, Boutique, Parking (free), 33 rooms.

Room Features: Wi-Fi (extra charge), Ocean views, Air-conditioning, Fan, Balcony.

Max Capacity: Ocean View/Luxury Ocean Front Villa – 4, Deluxe Ocean View – 4 adults or 2 adults/2 children. Other room types also available.

^Minimum 2 night stay applies.



* FROM PRICES ARE A GUIDE ONLY, subject to change and availability and are in Australian Dollars. Prices are per room per night for 2 people, unless otherwise specified and based on the lowest room category for travel in low season. For full terms and conditions, refer to the Booking Conditions on the inside back cover of this brochure.

PARADISE TAVEUNI



Vuna Road, Taveuni Island
MAP PAGE 40

From **\$906***

- ❖ Boutique oceanfront family-run resort
- ❖ Unique deep water frontage allows for snorkelling and diving any time of the day
- ❖ Learn to dive with the on-site PADI divers

Includes breakfast, lunch and dinner daily.

Location: Positioned at the southern end of Taveuni and set on five acres of elevated oceanfront land. Distances: Beach 50m, Taveuni Matei Airport 42km.

Getting There: From Nadi Airport by plane to Taveuni Airport, then private car to Paradise Taveuni. Private car transfers are included. Ask your travel agent for details.

Property Features: Free Wi-Fi (reception area only), Pool, Spa, Restaurant, Bar, Room service, Day spa, Guest lounge, Resort shop, Laundry service, 16 rooms.

Room Features: Wi-Fi (extra charge), Air-conditioning, Patio, Tea/coffee making facilities, Outdoor shower, Hair dryer, Safe.

Max Capacity: Oceanview Bure/Oceanfront Vale – 2, Oceanfront Bure/Luxury Oceanfront Bure – 4, Oceanview Family Bure – 2 adults/2 children. Other room types also available.



KORO SUN RESORT & RAINFOREST SPA, SAVUSAVU



Hibiscus Highway, Savusavu, Vanua Levu
MAP PAGE 40

From **\$593***

- ❖ Indulgent Spa, hidden in the spectacular rainforest and beside a small waterfall
- ❖ Perfect for romance with Fiji's most affordable overwater accommodation
- ❖ Great for families with a kids pool, waterslide, kids club and nanny service

Includes continental breakfast and afternoon tea daily.

Location: Set on a 160 acre rainforest sanctuary on the island of Vanua Levu with beautiful lush tropical surroundings. Distances: Waterfront, Savusavu Airport 12km.

Getting There: From Nadi Airport by plane then vehicle transfers from Savusavu Airport or Labasa Airport. Transfers are included. Ask your travel agent for details.

Property Features: Pools (3), Spa, Golf course (9 hole), Restaurants (3), Bars (4), Day spa, Kids club 4-12 years (free), Nanny service (free), 56 rooms.

Room Features: Air-conditioning, Fan, Patio, Tea/coffee making facilities, Hair dryer, Ironing facilities, Safe.

Max Capacity: Tropical Bure/Garden Bure/Edgewater Bure/Edgewater Floating Bure – 2, Edgewater Pool Bure – 3, 2 Bedroom Pool Bure/Edgewater Villa – 4. Other room types also available.



SAVASI ISLAND RESORT, SAVUSAVU



Savasi Island
MAP PAGE 40

From **\$746*^**

- ❖ Exclusive island escape, a perfect place to rejuvenate your senses
- ❖ Dine under the Milky Way, on a secluded beach, or a candle-lit cavern
- ❖ Snorkel pristine reefs right on your doorstep or kayak inland lakes

Includes breakfast, lunch and 3 course dinner daily, return transfers from Savusavu Airport, welcome cocktail and revival foot soak on arrival.

Location: A boutique island resort just ten minutes from Savusavu Airport on Vanua Levu. Distances: Beachfront, Savusavu 3km.

Getting There: From Nadi Airport by plane then free transfers from Savusavu Airport.

Property Features: Restaurant, Bar, Room service, Sea Spray Spa (day spa), Resort shop, Activity centre, Laundry service, Guest lounge, 16 rooms.

Room Features: Private pool (except Nautical accommodation), Ocean view, Air-conditioning, Patio, Tea/coffee making facilities, Outdoor bath (Sea Breeze Villa and Clifftop 5), Bathrobes, Hair dryer.

Max Capacity: Blue Lagoon Bure One/Blue Lagoon Bure Three/Clifftop Villa One/Clifftop Villa Two – 3, Blue Lagoon Bure Two/Waterfall Villa – 5. Other room types also available.

^ Minimum 2 night stay applies.



JEAN-MICHEL COUSTEAU RESORT FIJI, SAVUSAVU



Savusavu Bay, Vanua Levu
MAP PAGE 40

From **\$1820*^**

- ❖ Great for couples and families with many diverse complimentary activities
- ❖ Families will love the kids club, free nanny and the three family pools
- ❖ Renowned Jean-Michel Cousteau Dive Centre and two on-site Marine Biologists

Includes breakfast, lunch and dinner daily, non-alcoholic beverages (excludes mocktails) and most activities including 5 weekly off-site excursions.

Location: This authentic, luxury eco sensitive resort overlooks Savusavu Bay and is surrounded by a marine sanctuary. Distances: Beachfront, Savusavu Airport 7km.

Getting There: From Nadi Airport by plane then vehicle transfers from Savusavu Airport.

Property Features: Private island, Pools (4), Restaurant, Café, Room service, Bar, Bula Kids Club 0-12 years (free), Nanny service 0-5 years (free), Day spa, 25 burees.

Room Features: Private plunge pool (The Villa), Ocean views (except Gardenview Bure), Spa (Honeymoon Point Reef Bure, The Villa), Air-conditioning (The Villa), Sun deck, Fans, Hammock, Tea/coffee making facilities, Mini bar, Bathrobes, Safe.

Max Capacity: Gardenview Bure/Oceanfront Bure – 4, Point Reef Bure/The Villa – 5, 2 Bedroom Oceanfront/Deluxe Oceanfront 2 Bedroom Bure – 6.

^ Minimum 5 night stay applies.



* FROM PRICES ARE A GUIDE ONLY, subject to change and availability and are in Australian Dollars. Prices are per room per night for 2 people, unless otherwise specified and based on the lowest room category for travel in low season. For full terms and conditions, refer to the Booking Conditions on the inside back cover of this brochure.

ACCOMMODATION INDEX

NADI AND SURROUNDS

Crowne Plaza Fiji Nadi Bay Resort & Spa	22
DoubleTree Resort by Hilton Fiji – Sonaisali Island	21
Fiji Gateway Hotel	20
First Landing Beach Resort and Villas	21
Ramada Suites Wailoaloa Beach Fiji	21
Tanoa International Hotel	20

Other Accommodation Options

Landers Bay Resort & Spa • Mercure Nadi • Novotel Nadi • Smugglers Cove Beach Resort • Tokatoka Resort Nadi

DENARAU ISLAND

Hilton Fiji Beach Resort & Spa	24
Radisson Blu Resort Fiji Denarau Island	25
Sofitel Fiji Resort & Spa	26

Other Accommodation Options

The Palms Denarau

CORAL COAST

Fiji Hideaway Resort & Spa	28
InterContinental Fiji Golf Resort & Spa	31

The Naviti Resort	28
Outrigger Fiji Beach Resort	32
Shangri-La Yanuca Island, Fiji	30
Warwick Fiji	29
Yatule Resort & Spa	29

Other Accommodation Options

Bedarra Beach Inn • Crusoes Retreat • Nanuku Auberge Resort Fiji • The Pearl Resort & Spa • Tambua Sands Resort Fiji

MAMANUCA ISLANDS

Beachcomber Island Resort	34
Castaway Island, Fiji	34
Lomani Island Resort	36
Mana Island Resort & Spa – Fiji	36
Matamanoa Island Resort	37
Musket Cove Island Resort	37
Plantation Island Resort	35
Tokoriki Island Resort	38
Treasure Island Resort	37
Vomo Island	39

Other Accommodation Options

Likuliku Lagoon Resort • Malolo Island Resort • Tropica Island Resort

YASAWA ISLANDS

Mantaray Island Resort	39
Yasawa Island Resort & Spa	39

Other Accommodation Options

Navutu Stars Resort

REGIONAL FIJI

Jean-Michel Cousteau Resort Fiji, Savusavu	41
Koro Sun Resort & Rainforest Spa, Savusavu	41
Paradise Taveuni	41
Savasi Island Resort, Savusavu	41
Tanoa Plaza Hotel, Suva	40
VoliVoli Beach Resort, Rakiraki	40

Other Accommodation Options

Namale – The Fiji Islands Resort and Spa • Royal Davu Island Resort • Tanoa Rakiraki Hotel



Yasawa Islands

Tourism Fiji/Chris McLennan

Please read these Booking Conditions carefully as they apply to all bookings with Viva Holidays.

HOW TO BOOK

Contact your ATAS travel agent and request a reservation. All verbal quotes provided are an estimate only and subject to change until confirmed in writing.

PRICES & CONDITIONS

This brochure was produced on 26 September 2023. Unless otherwise stated, prices are in Australian dollars and include GST where applicable. Exchange rates used when pricing this brochure are as at 19 September 2023. All prices are subject to availability, subject to change and can be withdrawn or varied without notice. Prices are to be used as a guide only. Accommodation prices are based on the lowest room category in low season. Some prices are based on dynamic rates, which means they will be different from the advertised price if it has been varied by the supplier since being advertised by Viva Holidays. Price changes may occur by reason of matters outside our control which increase the cost of the Product or Service. Such factors include (without limitation) adverse currency fluctuations, fuel surcharges, taxes and airfare increases. Surcharges and minimum stays may apply due to demand, Christmas and New Year's Eve, school and public holidays, special events and other circumstances. All prices are the lowest available prices at the time of print and are a guide only. Please check all prices, availability, fees, conditions and information with your travel agent before booking.

If we must change any part of your booking for reasons beyond our control, for example, an Accommodation Supplier overbooks accommodation, or if there is an increase in taxes or Supplier charges, we will notify you. If any such changes result in your holiday costing more or otherwise being materially different from that originally booked, you may cancel the booking and we will refund any monies already paid less any charges levied by Suppliers.

PRICES DO NOT INCLUDE

Anything not specifically indicated as being an inclusion.

OMISSIONS & ERRORS

While every effort is made to ensure the accuracy and currency of the information in the brochures, errors or omissions may occur. All errors and omissions identified post the date of publication are notified to our retail partners to advise you. Please check with your agent for all up-to-date corrections, including prices and inclusions.

DEPOSITS & FINAL PAYMENTS

Deposit

A minimum non-refundable deposit of \$55 per person is payable within 7 days of confirmation of your booking. You will be notified at the time of booking if any additional deposit is required.

Final Payment

Final payment of your holiday cost is required no later than 30 days prior to departure or by sale end date or by the payment deadline specified in individual package conditions, whichever is earlier. Some services may require full payment at the time of booking. For bookings made less than 31 days prior to travel, full payment of holiday cost is required at the time your booking is confirmed.

Please ensure payments are made by the due dates. If this does not happen, our system will automatically cancel the booking without notice or liability to you.

Only upon payment of the full cost of your holiday do you have a final booking with the Supplier of the relevant good and/or service. In arranging your booking, Viva Holidays is acting as the agent of the Supplier of the relevant Product and at no time do you have a contract with Viva Holidays.

CREDIT & DEBIT CARD SURCHARGES

A fee will apply for payments made by debit and credit cards. Fees may vary depending on card type. Please check this fee with us or your travel agent when booking.

FEEES

Amendment Fees

If you wish to change your booking prior to departure, an amendment fee of \$30 will be charged if the overall value of the booking remains the same or decreases, in addition to any fees imposed by the Supplier of each service booked.

Late Booking Fees

A fee of \$30 will be charged for all bookings made less than 7 days prior to travel.

All fees can be varied without notice.

CANCELLATIONS & REFUNDS

Prior to Final Payment

Your deposit is forfeited.

After Final Payment

There will be no refund of your deposit, in addition to any fees imposed by the Supplier, which may be up to 100% of monies paid.

After Travel

There will be no refund if you cancel your booking once travel has commenced. There will be no refund for unused services, except for OPEN DATED services where the service was not booked with the Supplier. Requests for refunds received more than 6 months after departure date will not be accepted.

Should a refund after departure be approved, a \$110 refund processing fee will apply.

RESPONSIBILITY

Viva Holidays acts as an agent for the Suppliers (transport, tour, event or accommodation providers) who provide the various goods and/or services (Products). All bookings are subject to the terms and conditions and limitations of liability imposed by each Supplier. It is therefore important for you to obtain and read the applicable Supplier's terms and conditions as they may limit or exclude their liability to you.

In producing this brochure, we have used information provided by Suppliers. Irrespective of any measures taken by us to ensure the information contained in this brochure is accurate at the time of printing, Viva Holidays disclaims and will be exempt from liability in respect of anything misleading, false, incomplete or inaccurate and any errors, misdescription and all associated disappointment, loss, expense, damage, inconvenience, delay, death, shock, illness or injury, however caused.

Viva Holidays does not control the manner in which Products featured within this brochure are provided. Viva Holidays disclaims and will be exempt from liability for anything to do with the supply of such Products. This includes liability (whether as a matter of contract, tort, statute, restitution, or otherwise) for any direct, indirect or consequential loss, liability, claim, cost, expense, proceeding, demand, penalty, disappointment, death, injury, illness, shock, inconvenience or delay. This limitation of liability also applies irrespective of the cause, including negligence of us or a Supplier, withdrawal, cancellation or failure to provide a Product, delay, any variation in the Product, the provision of substitute Products or a change in the Supplier. Without limitation, Viva Holidays will not be responsible if the Product is not available due to inclement weather conditions or other acts of God, civil disturbances, fire, floods, acts of Government or any other authorities, accident to or failure of machinery or equipment or industrial action.

MAPS & PHOTOGRAPHS

The maps in this brochure are intended as a guide only and are not to scale. They do not necessarily reflect actual routings or accommodation or attraction locations. Accommodation room photographs are representative only and actual rooms occupied may vary in decor and inclusions from those shown.

Some images used in this brochure are supplied courtesy of tourist bureaus, hotels, tour operators, Tourism Fiji, Ian Butterworth, Chris McLennan, Sigatoka River Safari, Captain Cook Cruises, Blue Lagoon Cruises, Ignacio Moya Coronado, Don Mammoser, William Campbell, Bruce Southwick, Adam Bruzzone, Thomas Vignaud, Ross Eason, Marie Le Coze, David Kirkland, Aaron K March, Stray Cat images, Rob Rickman, Oliver Bolch, Markus Gortz, Tessa Chrisp, Peter Lange, Rob Rickman and Stephen Goodenough.

PRODUCT DESCRIPTIONS

Product descriptions and accommodation ratings featured in this brochure are provided by the individual Suppliers. Facilities, features or ratings are subject to change at any time. Tours may not operate on certain dates and durations and departure times are approximate only. You should check at the time of booking for any changes to published information of which we may be aware.

BONDS

Bonds or credit card imprints are required by most Suppliers at the time of check-in to cover incidentals and fees not included in your holiday cost.

TRANSFERS & TOURS

Some Accommodation Suppliers provide courtesy transfers to/from the airport. It is essential that these transfers are pre-booked. Some Tour Suppliers provide complimentary pick up and return to your holiday accommodation and require a minimum number of passengers to operate. If minimum numbers are not achieved tours may be cancelled at short notice. Additionally, some Suppliers reserve the right to cancel departures for other reasons, including bad weather. Some tours and itineraries may also vary and attractions may be substituted due to seasonal conditions. Viva Holidays will not be held liable for a service variation, cancellation, delay or withdrawal, or a Supplier's failure to notify you. A full refund applies for the cancelled tour.

TRAVEL INSURANCE

We strongly recommend you take out appropriate travel insurance to cover your travel arrangements.

INTERNATIONAL TRAVEL

Each passenger is responsible for their own visa, passport (with at least 6 months validity), immigration, quarantine, customs and other requirements of the countries to be visited or transited through. Viva Holidays makes no representations as to the safety, conditions or other issues that may arise at any destination. Travel advice is available from the Australian Government at smartraveller.gov.au.

HEALTH

You must ensure you are aware of any health requirements and recommended precautions relevant to your travel and carry all necessary vaccination documentation with you to the countries to be visited. Failure to present required vaccination documentation may result in you being denied entry into a country. We recommend that you consult with your local doctor, travel medical service or specialist vaccination clinic before commencing your travel. General health advice for all destinations is also available from the Australian Government at smartraveller.gov.au.

PRIVACY

Viva Holidays collects information about you (including health information where necessary) to provide products and services to you, process your travel arrangements, facilitate your participation in loyalty programs and conduct marketing activities and market research. If the information is not provided, Viva Holidays may not be able to provide the Service requested. Viva Holidays may disclose your personal information to its related companies, carriers, travel service providers, organisations which provide services to Viva Holidays (more details are available in our Privacy Statement on our website vivaholidays.com.au) and various law enforcement agencies, airports and governments around the world for security, customs and immigration purposes. You may gain access to the information Viva Holidays holds about you by contacting our Privacy Officer in writing at 179 Normanby Road, South Melbourne VIC 3205 Australia or on privacyofficer@vivaholidays.com.au.

MONIES NOT HELD ON TRUST

All monies paid by you to us will be the property of Viva Holidays and will be a debt due and payable to the relevant Supplier (contingent on availing) once the services to which the money relates have been availed, or the relevant booking is cancelled (subject to cancellation fees). You agree and acknowledge that such monies will not be held by Viva Holidays on trust for or on behalf of you, and we may hold such monies in any account as we see fit, including with our own and/or other customer monies.

GOVERNING LAW

These conditions are governed by the laws of New South Wales, Australia and any action arising under them or in any way connected with a booking may be brought only in a court in New South Wales, Australia, subject to any law which is expressly inconsistent with this.

You acknowledge that you are 18 years of age or older and that you understand and agree with the above terms and conditions and our Privacy Policy. Please read our full booking terms and conditions at vivaholidays.com.au/policies/booking-conditions.


**Captain Cook
Cruises™**
FIJI'S CRUISE LINE


LUXURY SMALL SHIP
REMOTE EXPEDITION CRUISING
FIJI, TONGA AND SAMOA



MS CALEDONIAN SKY



helloworld
TRAVEL
THE TRAVEL PROFESSIONALS

 In store  13 14 15  helloworld.com.au

WE'RE
PROUD
TO BE
ATAS
travel accredited

VIVA
HOLIDAYS